

**2017-112**

# Homelessness in California

State Government and the Los Angeles Homeless Services Authority  
Need to Strengthen Their Efforts to Address Homelessness

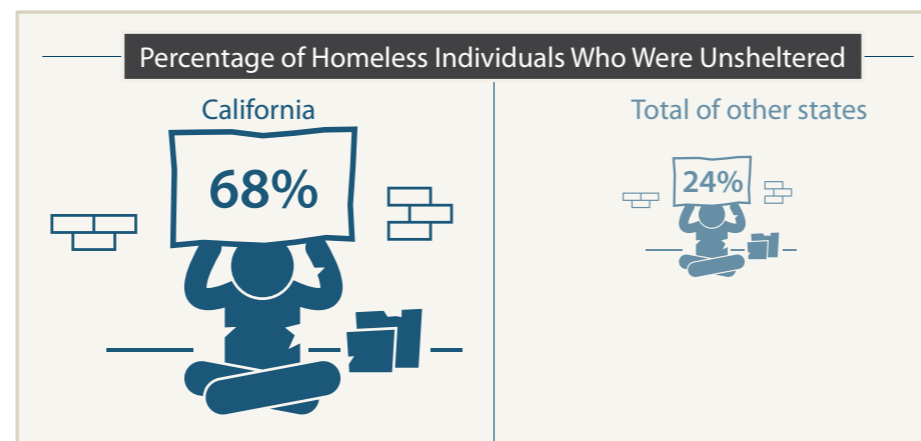
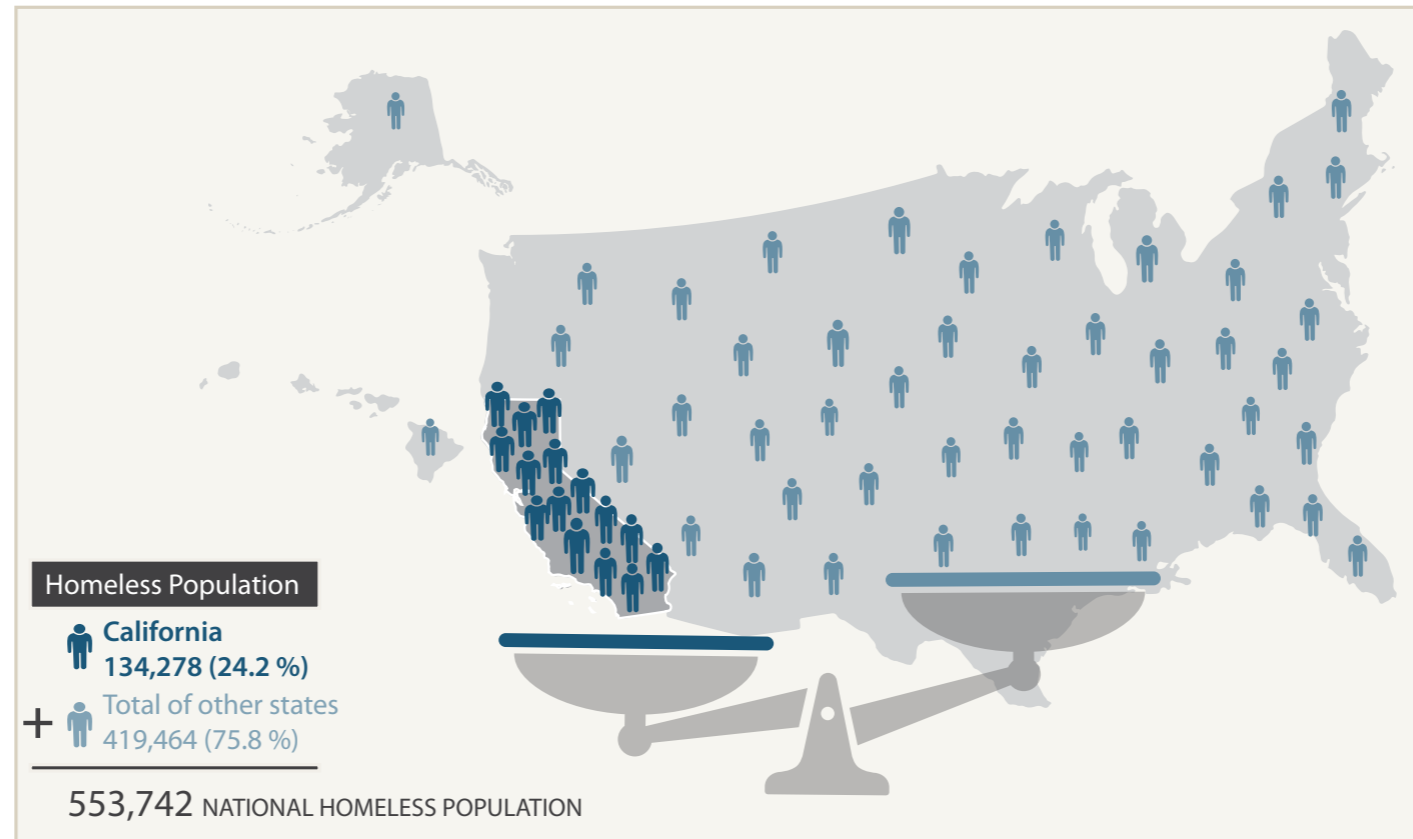
**Dale Carlson**

CALIFORNIA STATE AUDITOR



September 5, 2018

Figure 3  
**California's Large Homeless Population in January 2017 Was Unsheltered More Often Than in Other States**



Sources: Analysis of HUD's 2017 homeless report and 2017 point-in-time count data obtained from HUD's website.

### EasySearch

#### Most Recent

#### Testimonies

Report Text  
(Example: "Education")

#### Report type

- Financial/Federal Compliance
- Mandatory
- Discretionary
- Investigative
- State High Risk
- Local High Risk
- Special Reports to the Legislature

Year (Example: "1998, 2006-09")

Agency (Example: "Water Resources")

Search

### Search Results

#### Search Results

Date Issued	Report Number	Report Title
April 19, 2018	2017-112	Homelessness in California: State Government and the Los Angeles Homeless Services Authority Need to Strengthen Their Efforts to Address Homelessness
		<a href="#">Fact Sheet (PDF)</a> <a href="#">Summary</a> <a href="#">Full Report (HTML)</a> <a href="#">Full Report (PDF)</a> <a href="#">Recommendation</a> <a href="#">Supplemental Data</a>

Not all Audit Reports are currently available online.

[Information on ordering Reports not available via the Internet.](#)

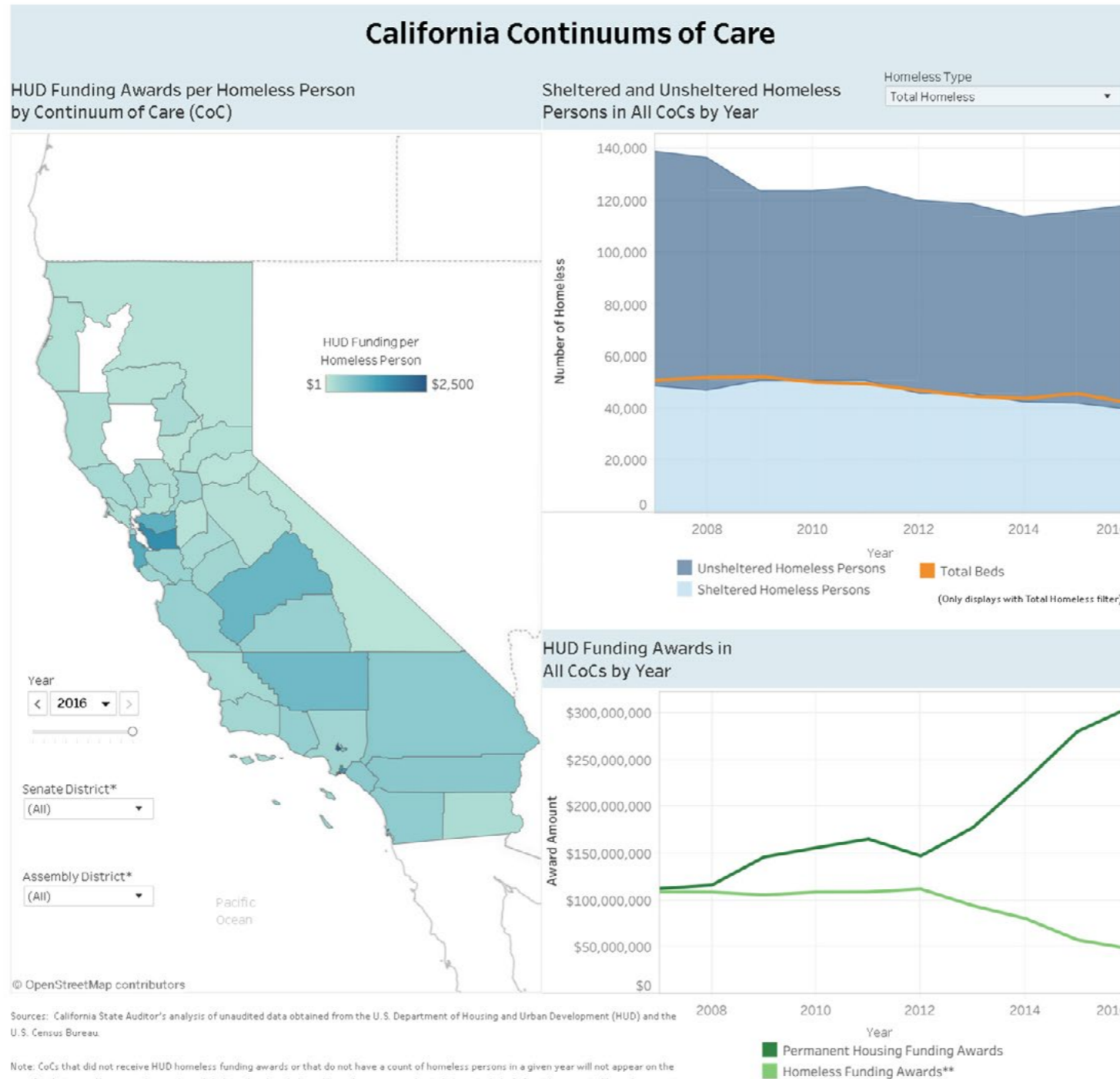
Stay current on California Government  
SUBSCRIBE TO OUR EMAILS >>



Protect the State. Protect Yourself.  
**REPORT IMPROPER ACTIVITY! 1.800.952.5665**

The U.S. Department of Housing and Urban Development (HUD) discloses in its annual homeless report the results of what it refers to as a *point-in-time* count. This is a count of sheltered and unsheltered homeless persons carried out on one night in the last 10 calendar days of January or at such other time as HUD requires. Furthermore, HUD also administers homeless assistance grants for the Continuum of Care (CoC) program. A CoC is a group organized to carry out the CoC program's responsibilities within a specified geographic area. The interactive map and graphics below presents this information across the State from 2007 through 2016. Use the filters on the graphics to view funding information and the number of homeless individuals by CoC in a specific legislative district and fiscal year.

[\(Accessible Content\)](#)



Sources: California State Auditor's analysis of unaudited data obtained from the U.S. Department of Housing and Urban Development (HUD) and the U.S. Census Bureau.

Note: CoCs that did not receive HUD homeless funding awards or that do not have a count of homeless persons in a given year will not appear on the map for that year. However, the number of sheltered and unsheltered homeless persons charted above include CoCs with a reported homeless count regardless of funding. Similarly, the HUD funding awards charted above include CoCs with HUD funding awards regardless of homeless count. For a complete list of survey responses, please see <https://www.auditor.ca.gov/reports/2017-112/surveylist.html>

\* Filtering by Senate or Assembly district will show all CoCs that reside either entirely or in part within the selected district.

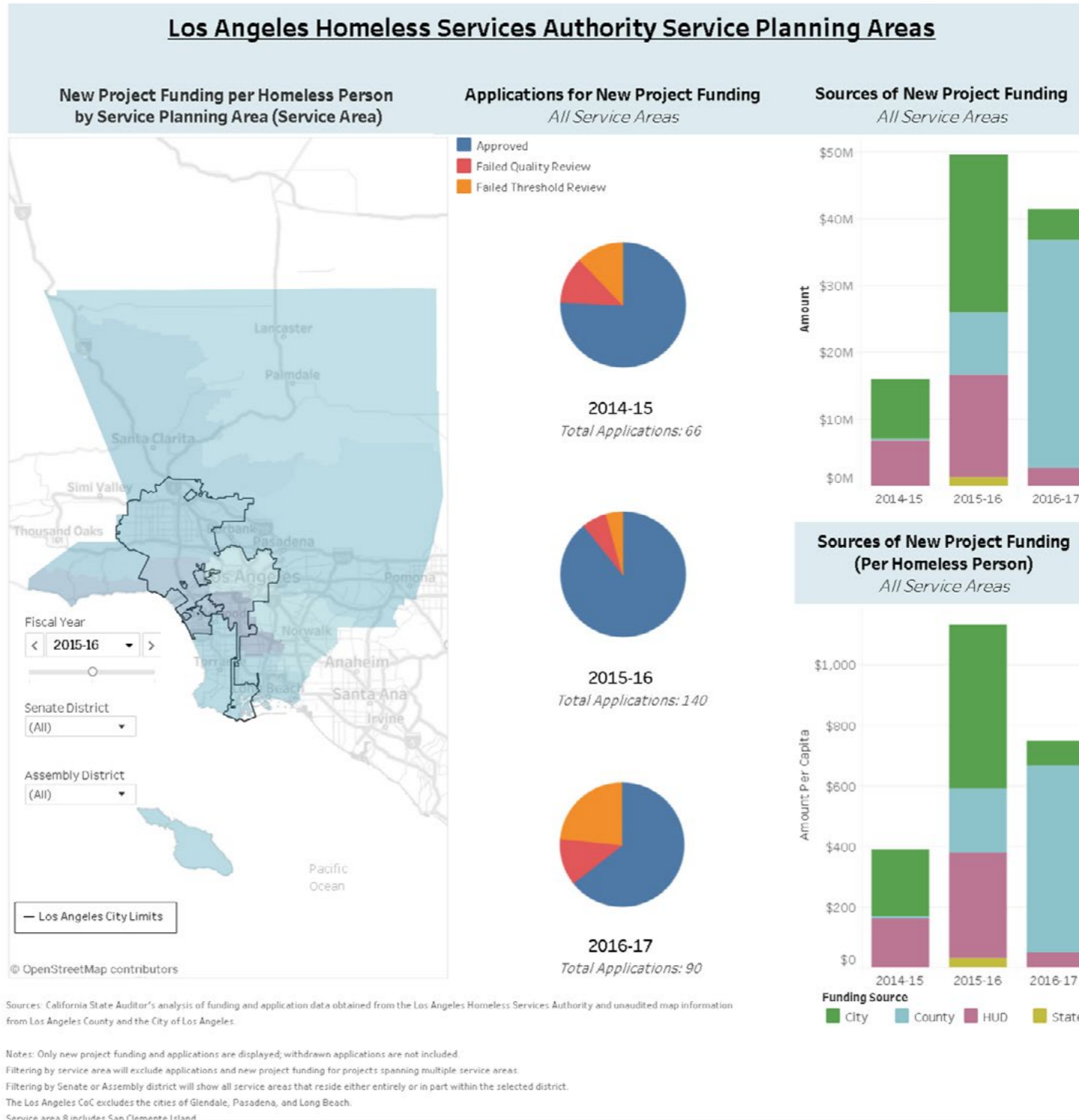
\*\* Homeless funding awards do not include awards HUD categorized as permanent supportive housing.

# STATEWIDE MAP



The Los Angeles City and County CoC (Los Angeles CoC) area consists of Los Angeles County, except the cities of Glendale, Long Beach, and Pasadena, which each has its own CoC. The Los Angeles Homeless Services Authority (Authority) is the Los Angeles CoC's lead agency. During fiscal years 2014-15 through 2016-17, the Authority used a two-phase competitive review process to evaluate applicants that wanted to provide services to the homeless. In the first phase (*threshold review*), the Authority assessed whether applicants met the minimum requirements to manage public funds. For those applicants that passed threshold review, the Authority then measured their ability to carry out specific project as part of the second review phase, *quality review*. The interactive map and graphics below show the results of the Authority's application review process for funding for new projects during fiscal years 2014-15 through 2016-17. Use the filters on the graphics to view funding and application information by service area in a specific legislative district and fiscal year.

[\(Accessible Content\)](#)



# LA HOMELESS SERVICES

**Access our website to learn more about the program**

**[auditor.ca.gov](http://auditor.ca.gov)**

