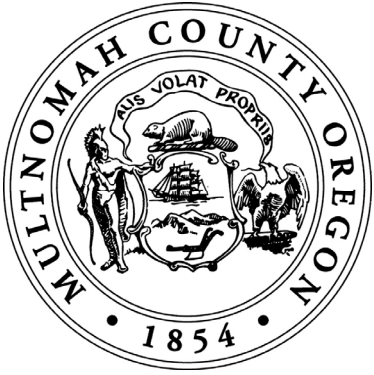


County Services Audit: Service Distribution Adapts to Changing Demographics

Multnomah County Auditor's Office

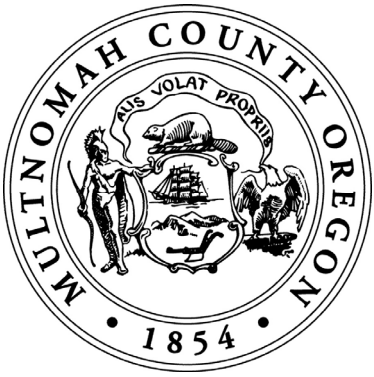
Steve March
Jennifer McGuirk
Mark Ulanowicz



County Services

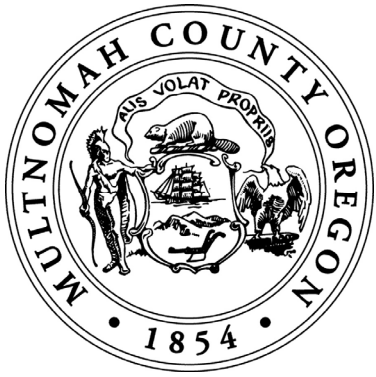
Multnomah County has a Broad Portfolio of Service Responsibilities

- Elections
- Jails
- Mental Health Insurance Plan
- Medical Clinic System
- Other Social Services



Geography: A Tale of Two Cities

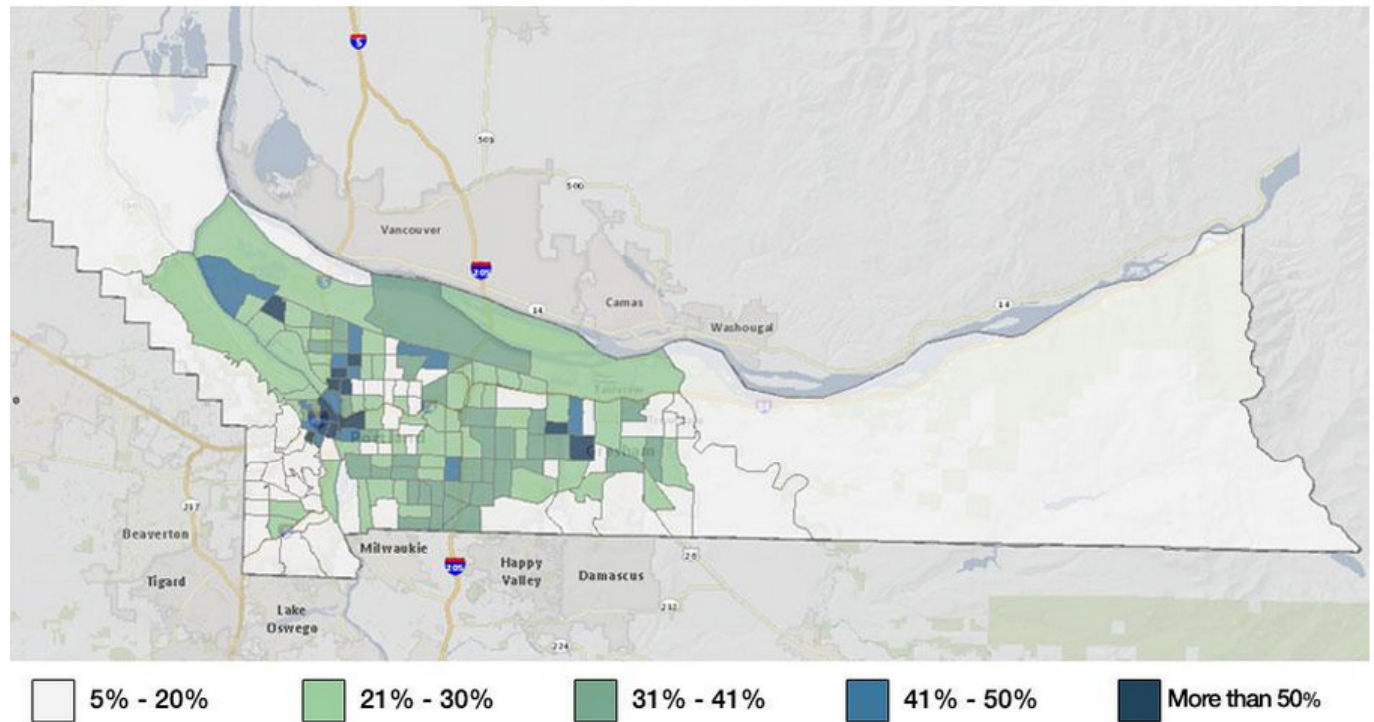
- Portland – largest city in Oregon – in the West
- Gresham – 4th largest city and 2nd fastest growing – in the East
- Urban vs. Suburban/Rural



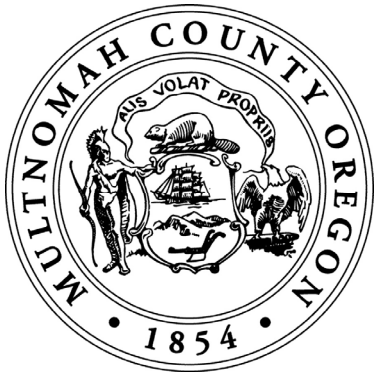
Demographic Changes

Changes in Concentration of Poverty

Exhibit 1: Poverty by Multnomah County Census Tracts, per 2000 Decennial Census



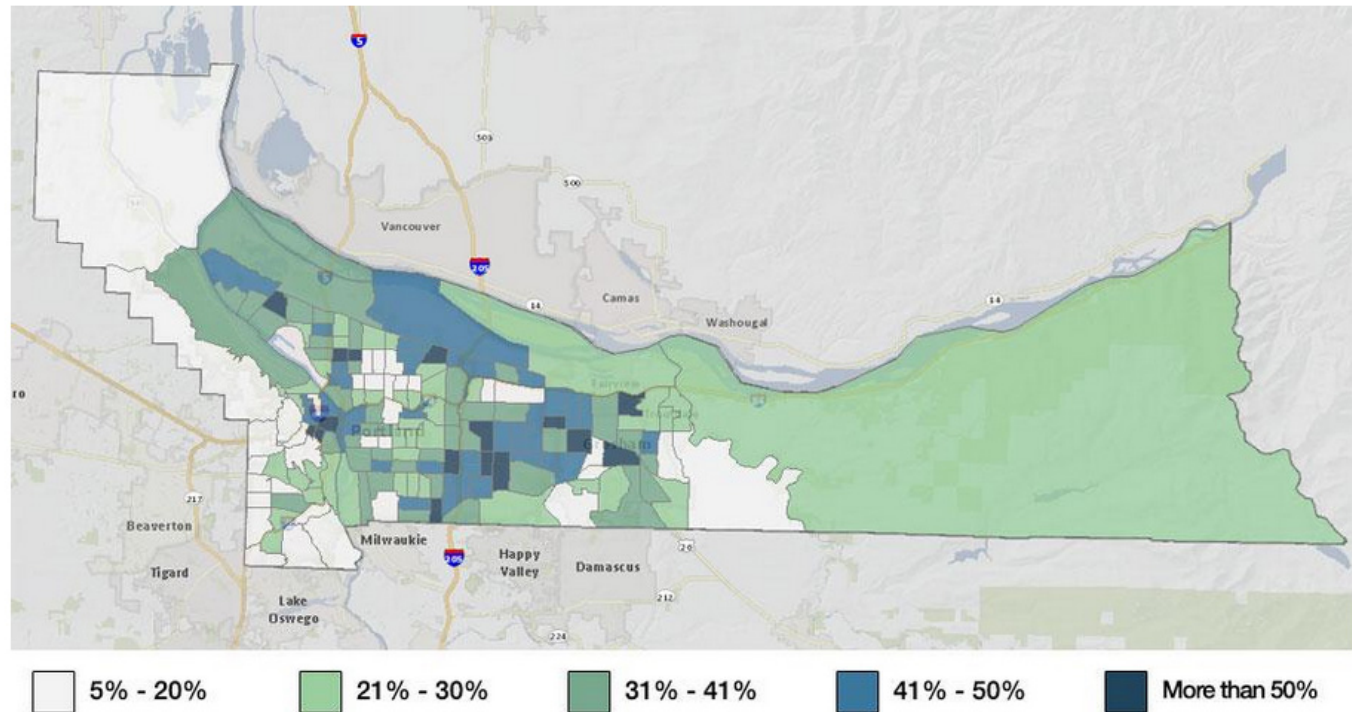
Data source: 2000 Decennial Census, % of Individuals Up to 185% of Federal Poverty Level, per census tract.



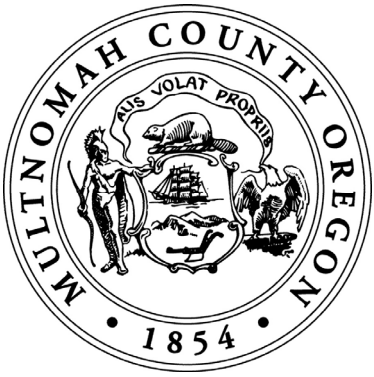
Demographic Changes

Changes in Concentration of Poverty

Exhibit 2: Poverty by Multnomah County Census Tracts, per 2009-13 American Community Survey

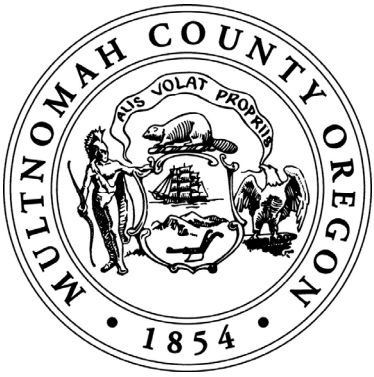


Data source: 2009-13 American Community Survey Five-Year Estimates, % of individuals up to 185% of Federal Poverty Level, per census tract



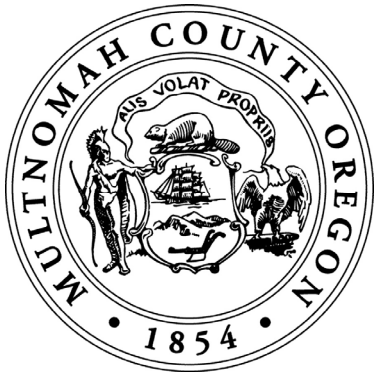
Objectives

- 1) Does Service Delivery Mirror the Changing Demographics?
- 2) What are Programs Doing to Make Sure they Know Where their Clients Are?
- 3) What is Preventing Programs from Matching Services to Greatest Need?



Results

- 1) Services Generally Mirror Need – flexible/mobile delivery is key
- 2) Programs Know their Populations – using a variety of tools and data
- 3) Resources – and not just money – are the Key Barrier



To The Maps...

<https://multco.us/auditor-county-service-distribution>