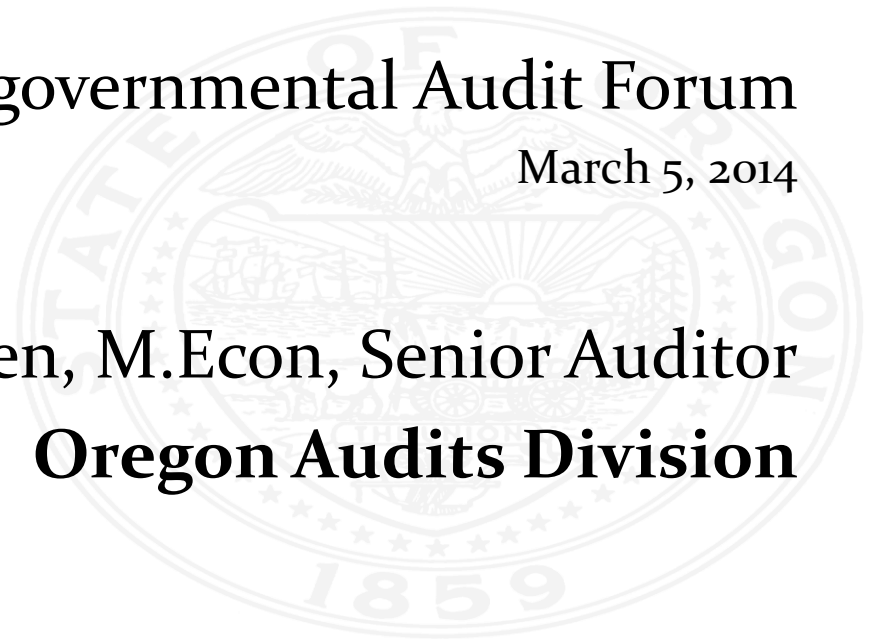


Using Census Data and Mapping in Audits

Pacific Northwest Intergovernmental Audit Forum

March 5, 2014

Ian M. Green, M.Econ, Senior Auditor
Oregon Audits Division



Agenda

- Objective – To learn about data sources and potential audit applications.
1. Introduce data sources
 2. Introduce tools
 3. Audit applications
 4. Apply knowledge



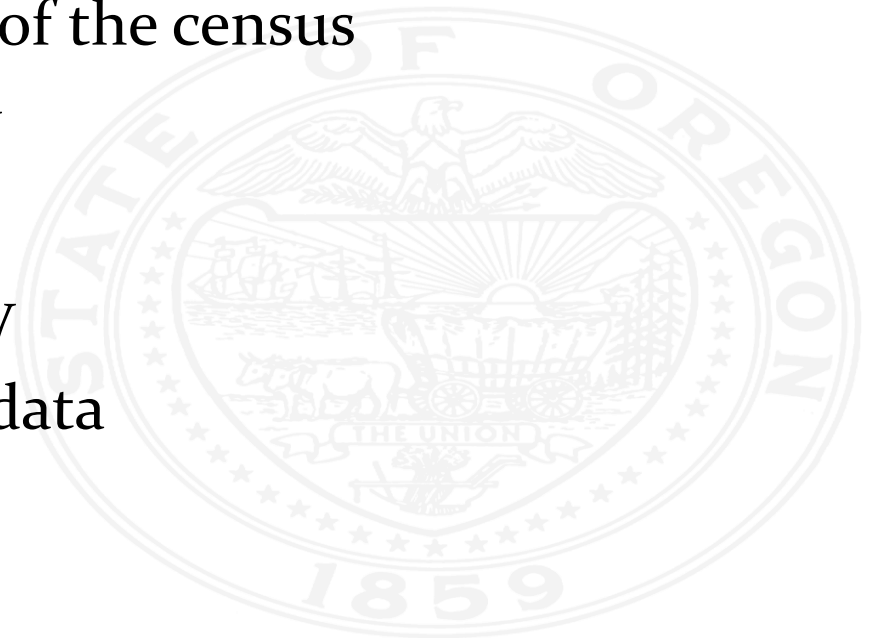
Census Data

- What information is available
- Why should I use it
- What value can it add



Demographic Surveys

- Decennial Census
- American Community Survey
 - 1-, 3- and 5- year estimates
 - Formerly the “long form” of the census
- American Housing Survey
 - Detailed housing data
- Current Population Survey
 - Economic & Labor Force data



Other Sources of Data

- Bureau of Labor Statistics
 - Inflation Calculator
- Bureau of Transportation Statistics
- Department of Housing and Urban Development
- National Center for Education Statistics
- National Center for Health Statistics



Other Sources of Data (Cont.)

- Social Security Administration
 - Death Master File
- Office of Economic Analysis
 - Economic Forecast
 - Revenue Forecast
 - Demographic Forecast
 - Corrections Forecast
- DAS Geospatial Enterprise Office
- Portland State Population Research Center



Census Geography

- Census data is divided into several geographic areas
 - Census block
 - Census tract
 - Census place
 - County
 - State



Tools Overview

- Census
 - Free, but difficult to use and learn
 - FactFinder
 - Census Explorer
- Social Explorer
 - Easy to use tool, inexpensive
- ArcGIS
 - Powerful, but can be difficult to learn, expensive



Accessing Data & Tools

- Tiger
 - Reference maps
 - “Shapefiles”
 - Needed for ArcGIS
- Factfinder
- Social Explorer

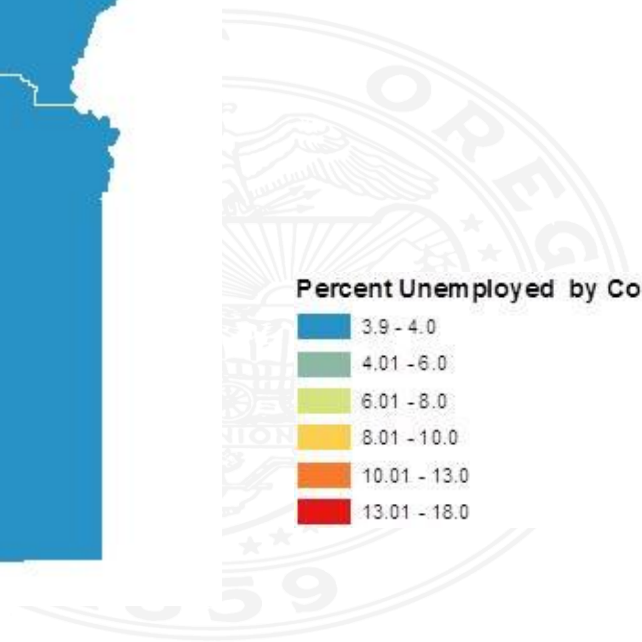
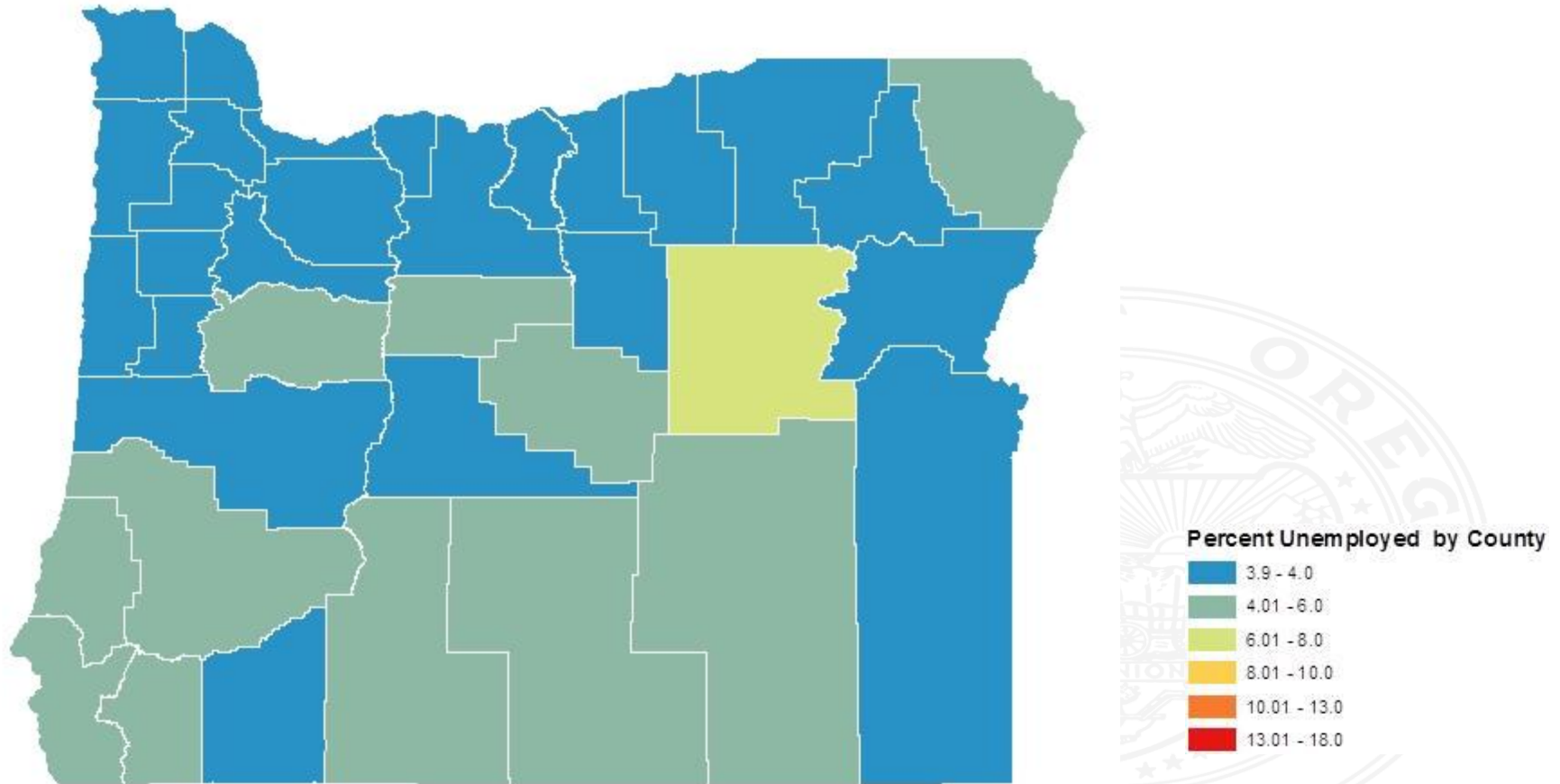


Videos

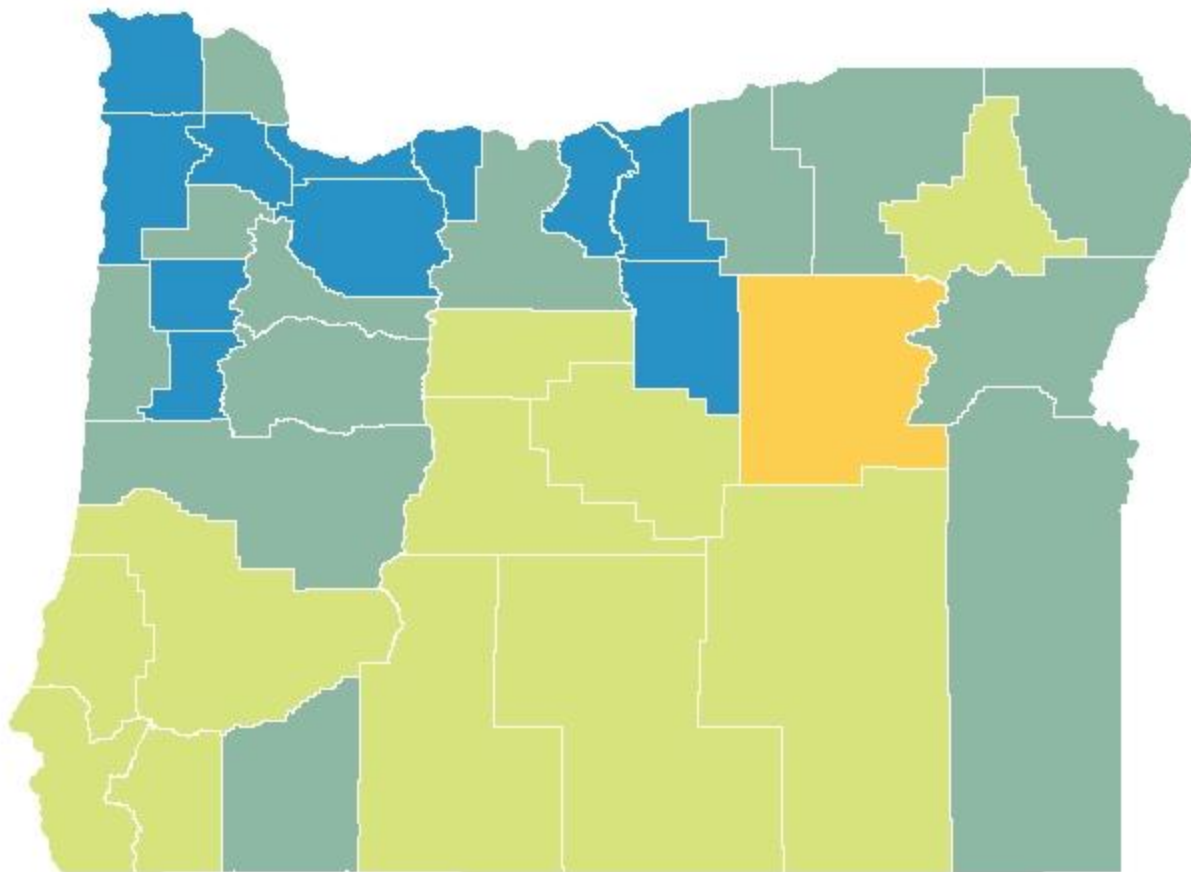
- GIS
- <http://www.youtube.com/watch?v=6AlH5TvFoLw>
- Social Explorer
- <http://www.youtube.com/watch?v=sJfh7h1IpjY>



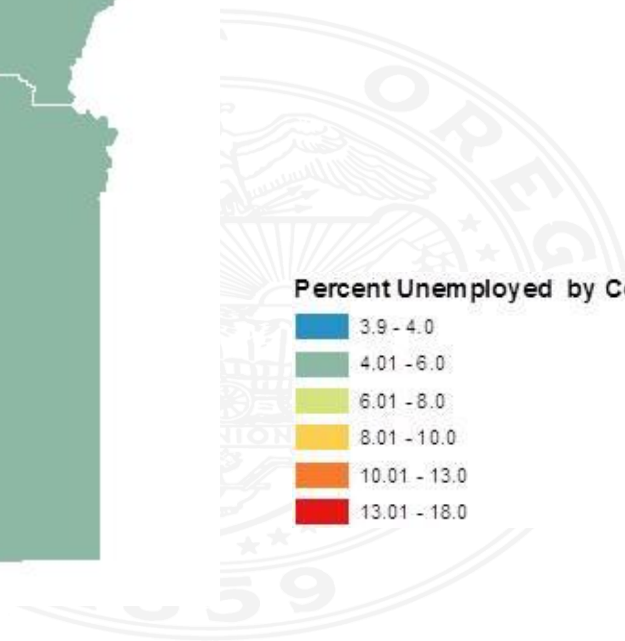
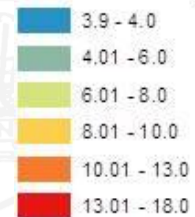
Tell a story - 2007



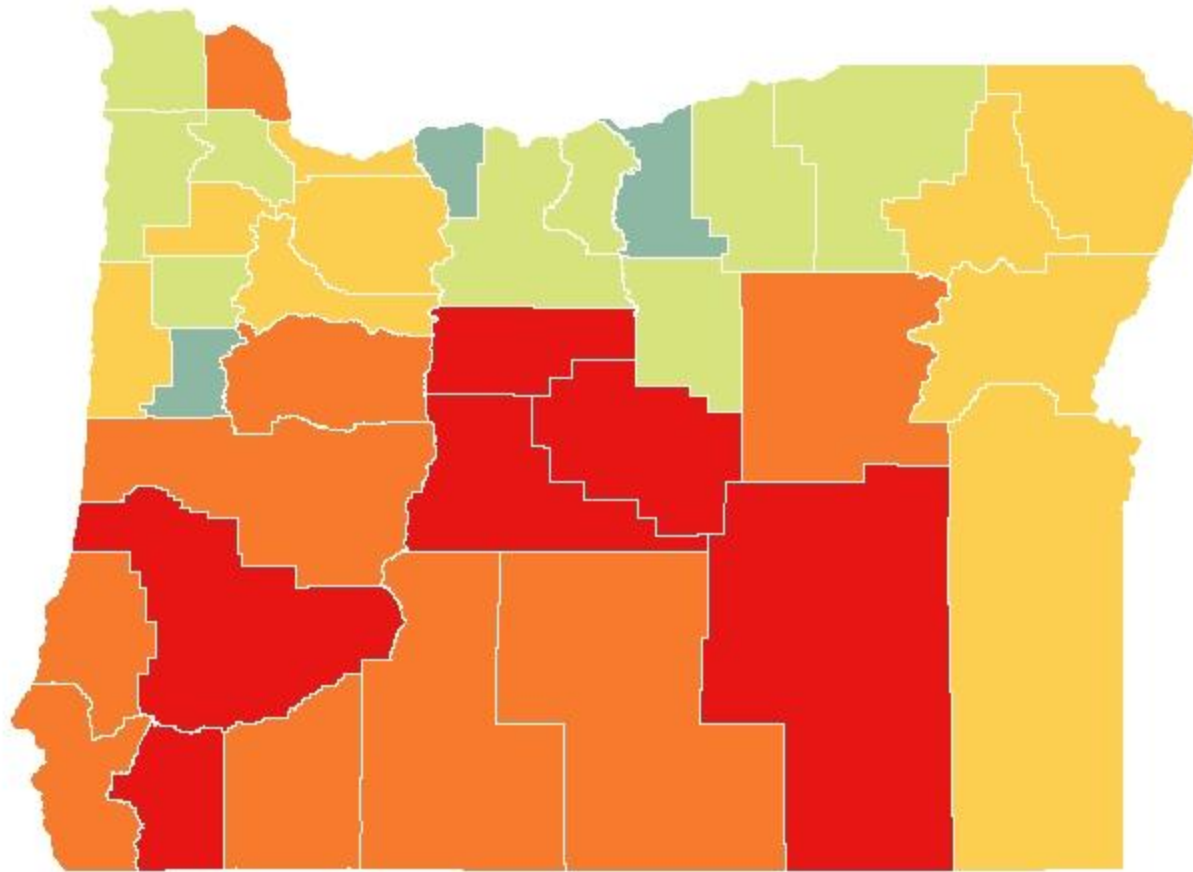
2008



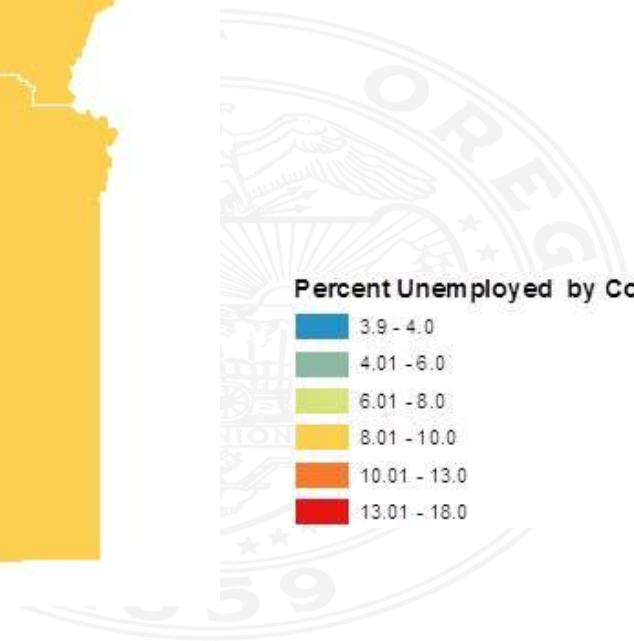
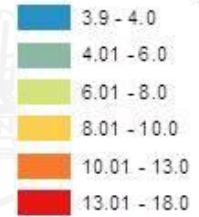
Percent Unemployed by County



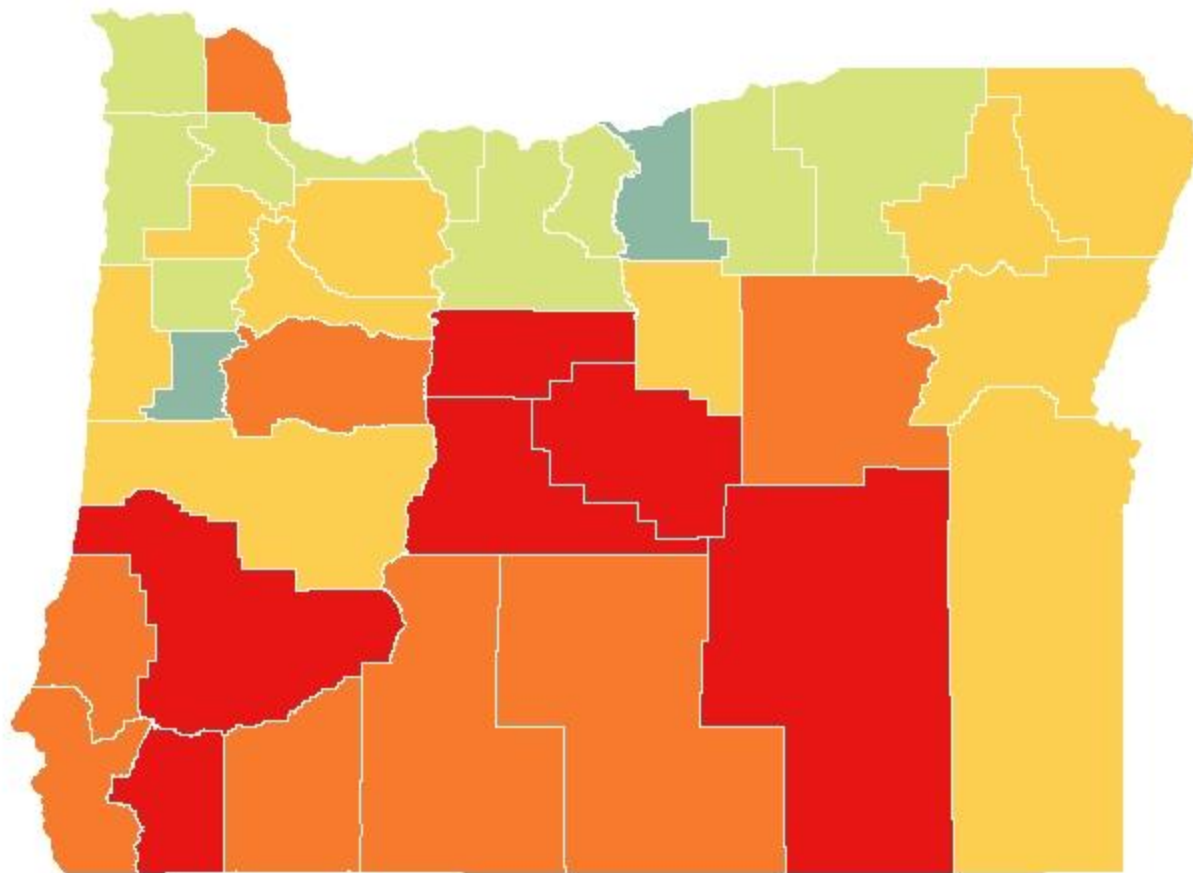
2009



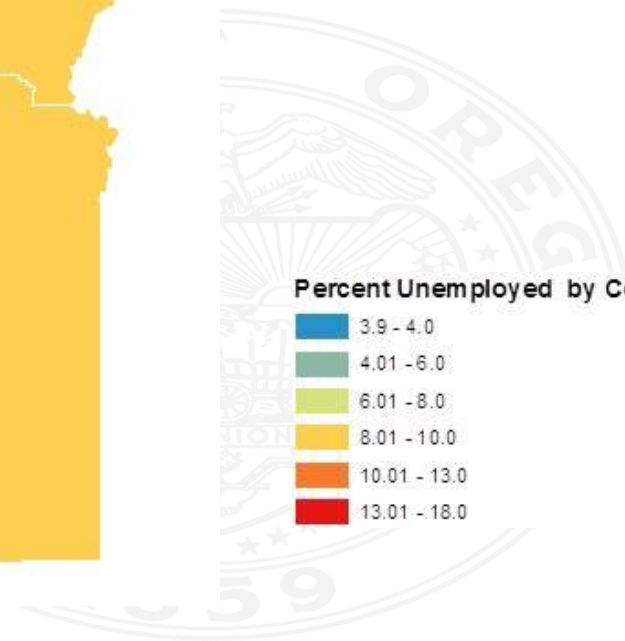
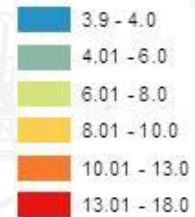
Percent Unemployed by County



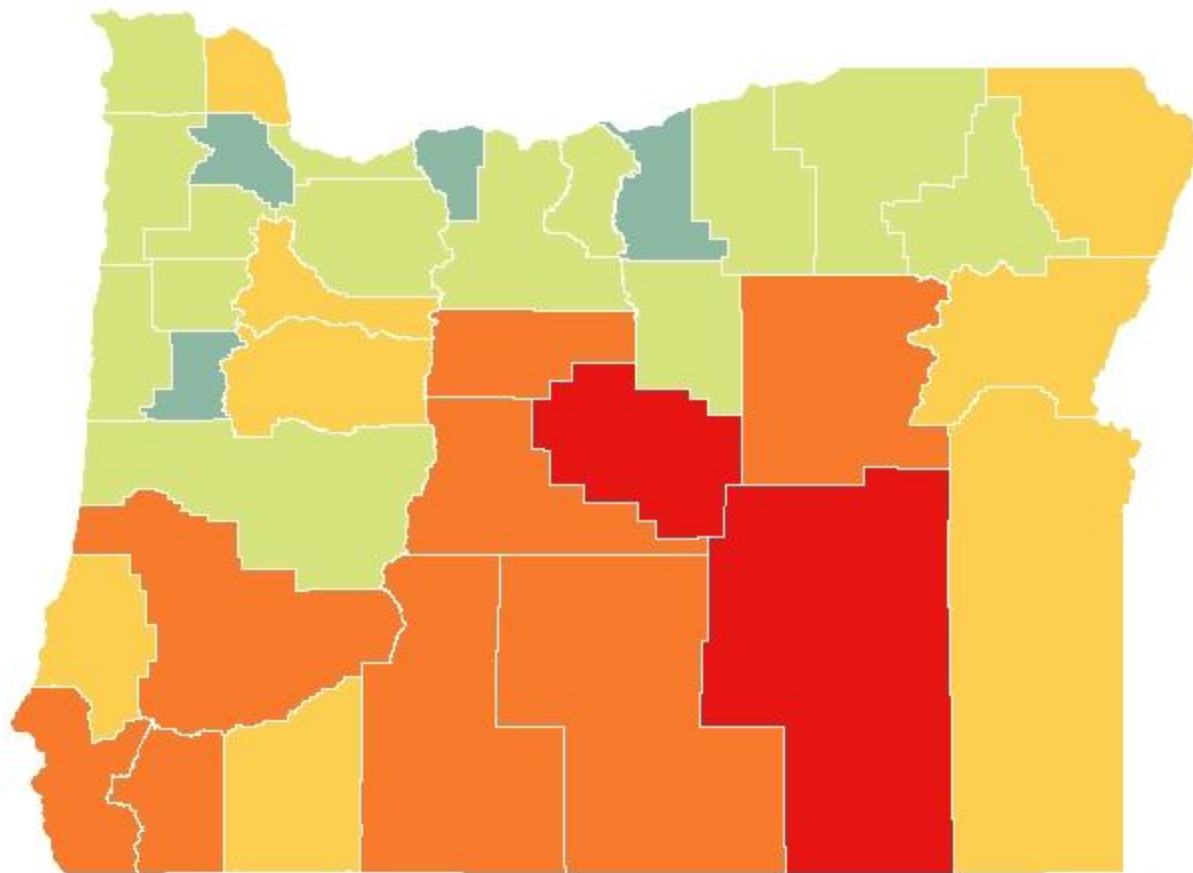
2010



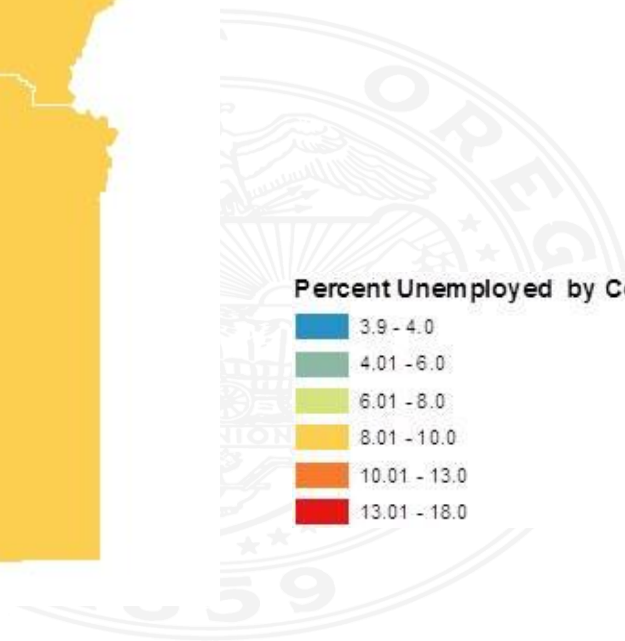
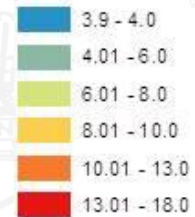
Percent Unemployed by County



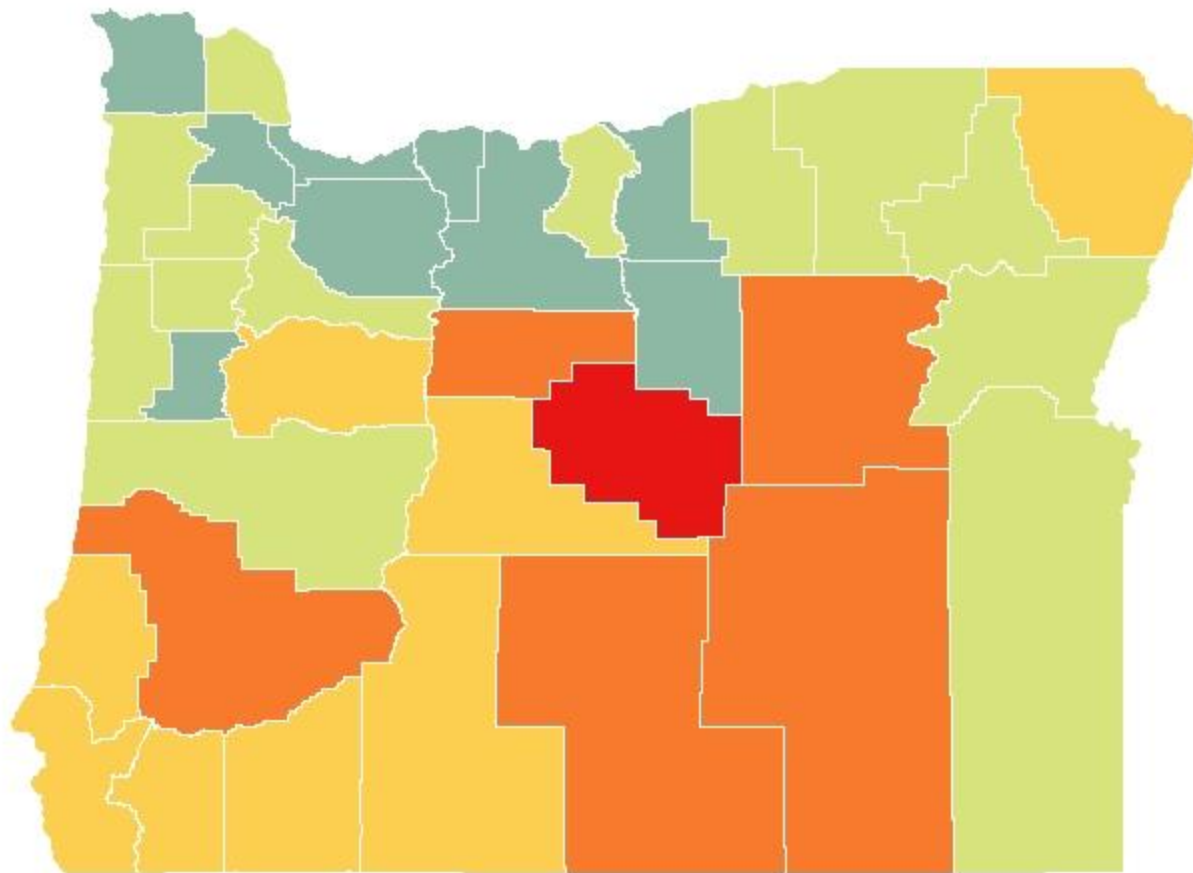
2011



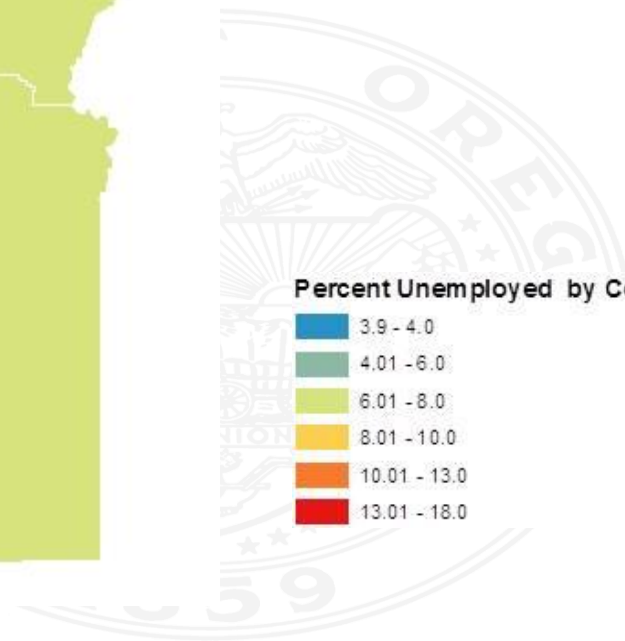
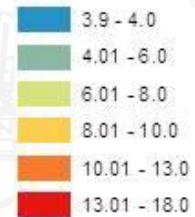
Percent Unemployed by County



2012



Percent Unemployed by County

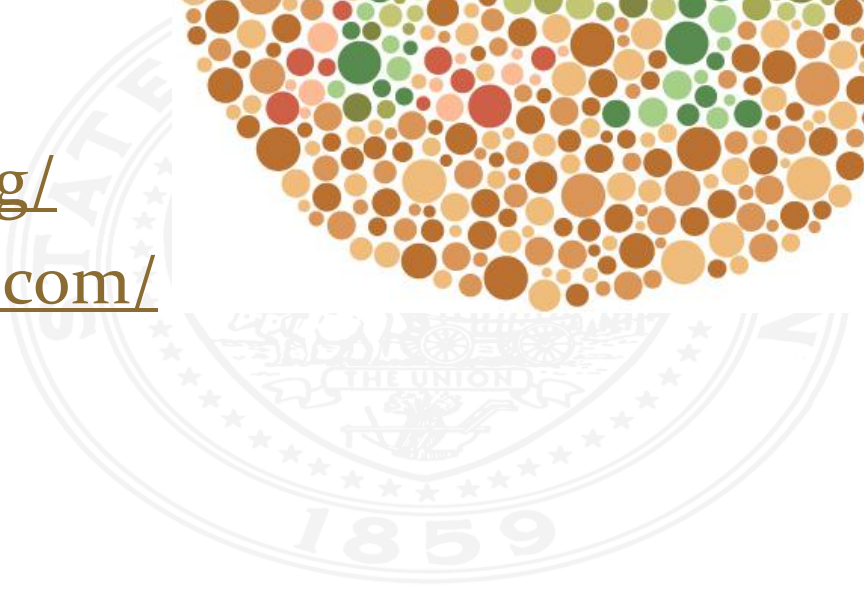
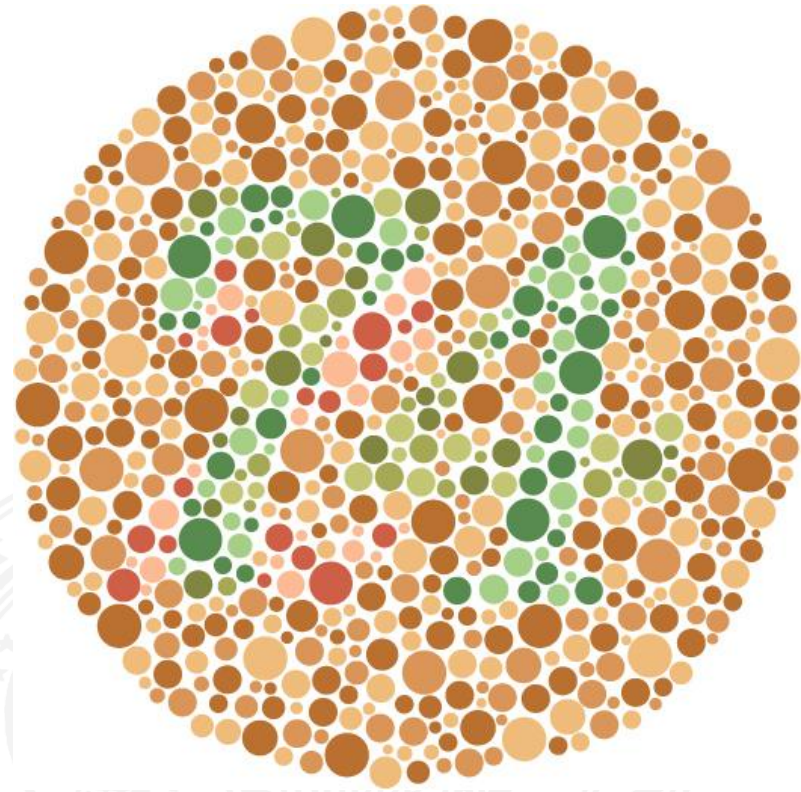


Color Considerations

- B&W Printable
- LCD compatible
- Colorblind – 15%
- Photo copy friendly

<http://www.colorbrewer2.org/>

<http://colorschemedesigner.com/>

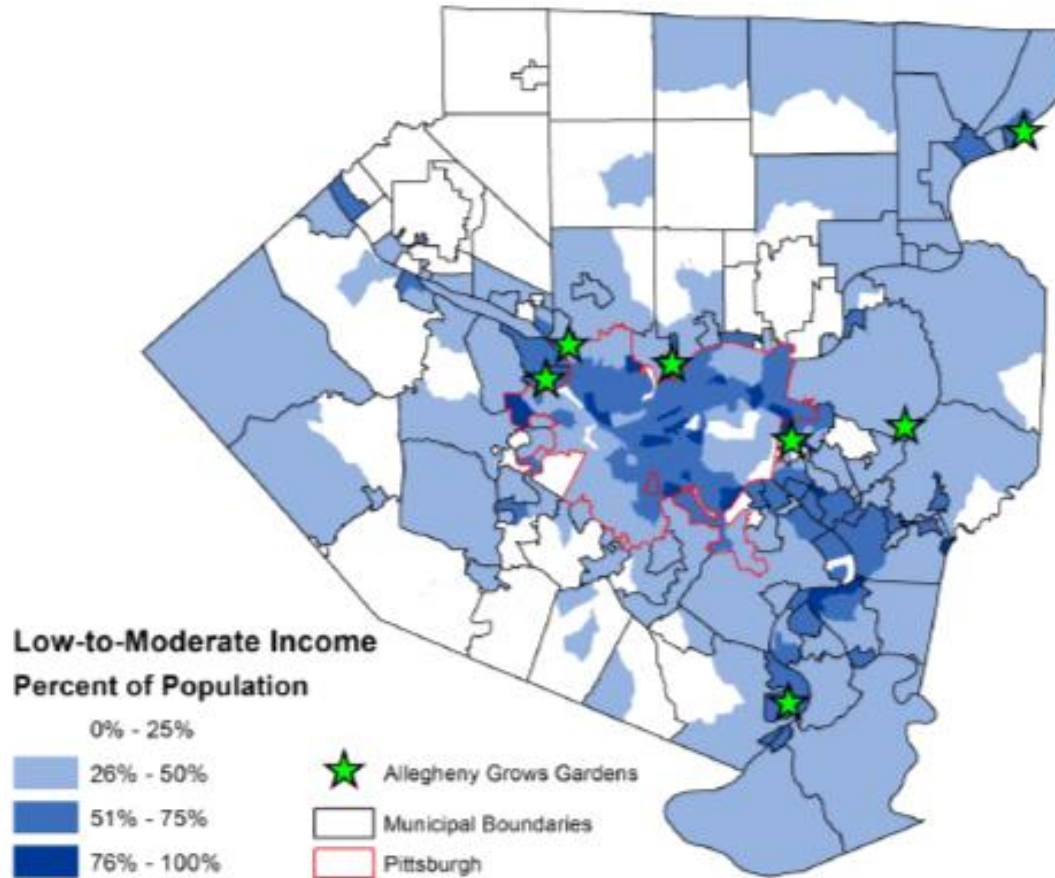


Potential Audit Applications

- Any data source with spatial component
 - Background information
 - Fleet Services
 - Office Locations
 - Fraud Detection



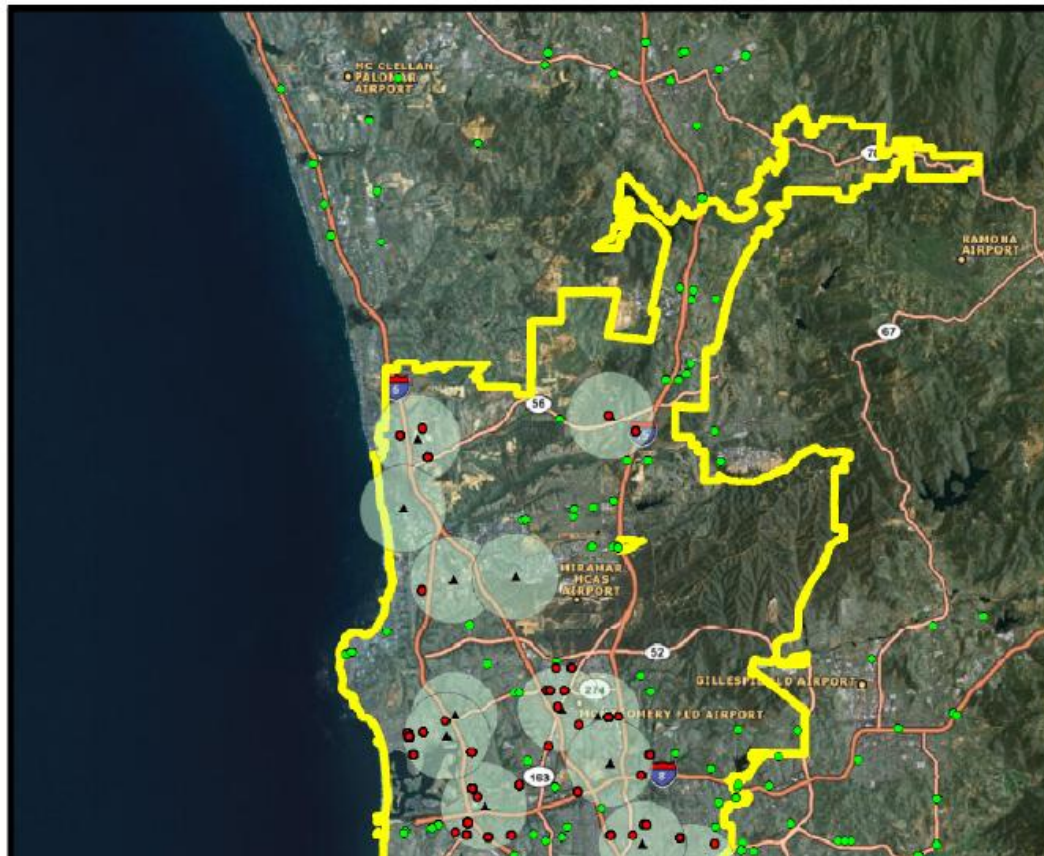
Q: Are services in the right location?



- Source: Heinz College Student Team (2012), U.S. Dept of Housing and Urban Development (2011). U.S. Census Bureau (2000). Grow Pittsburgh (2012).

Fuel Purchases

Fuel Card Purchases Near City Fuel Sites During Fiscal Year 2010

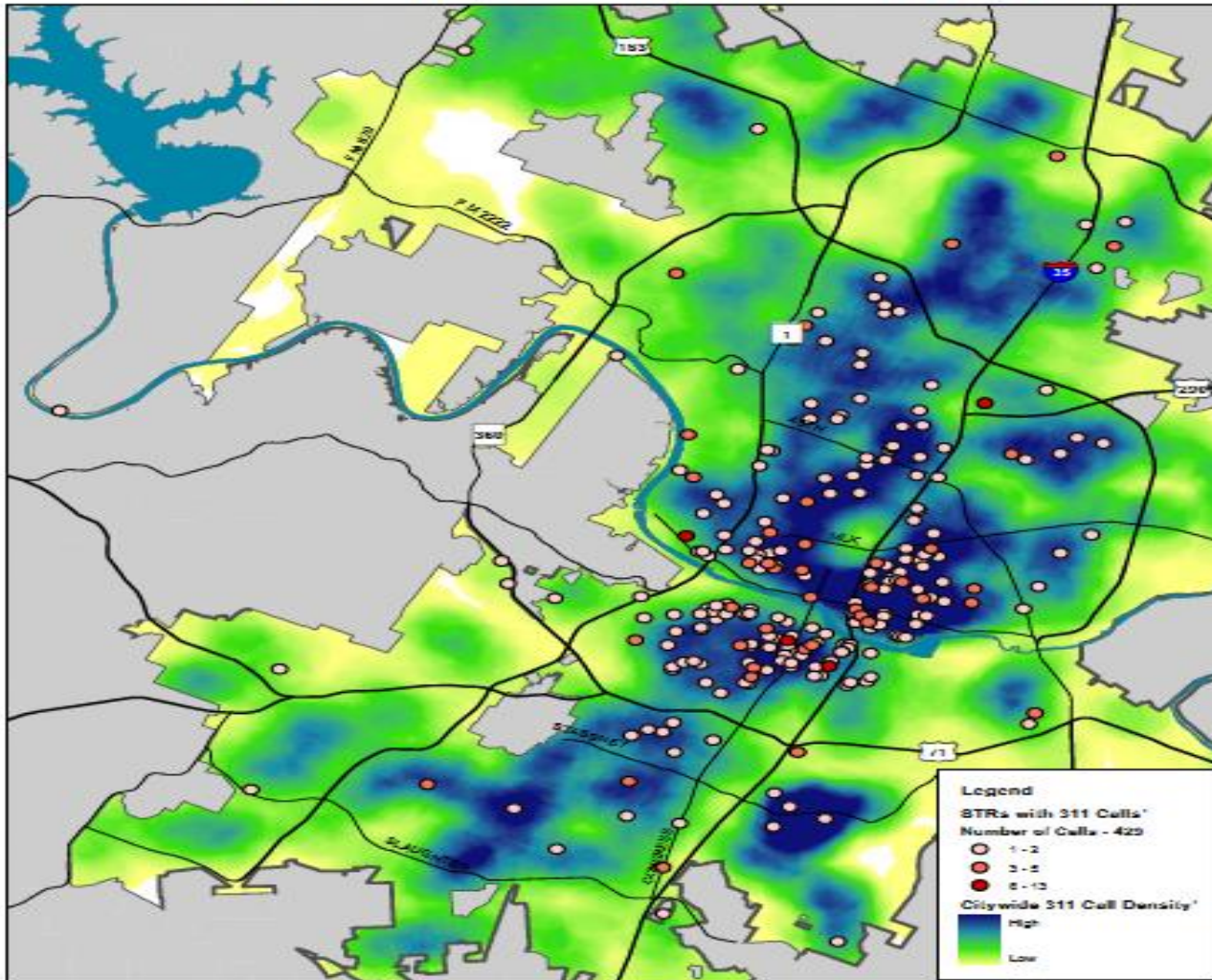


Take Home Vehicles

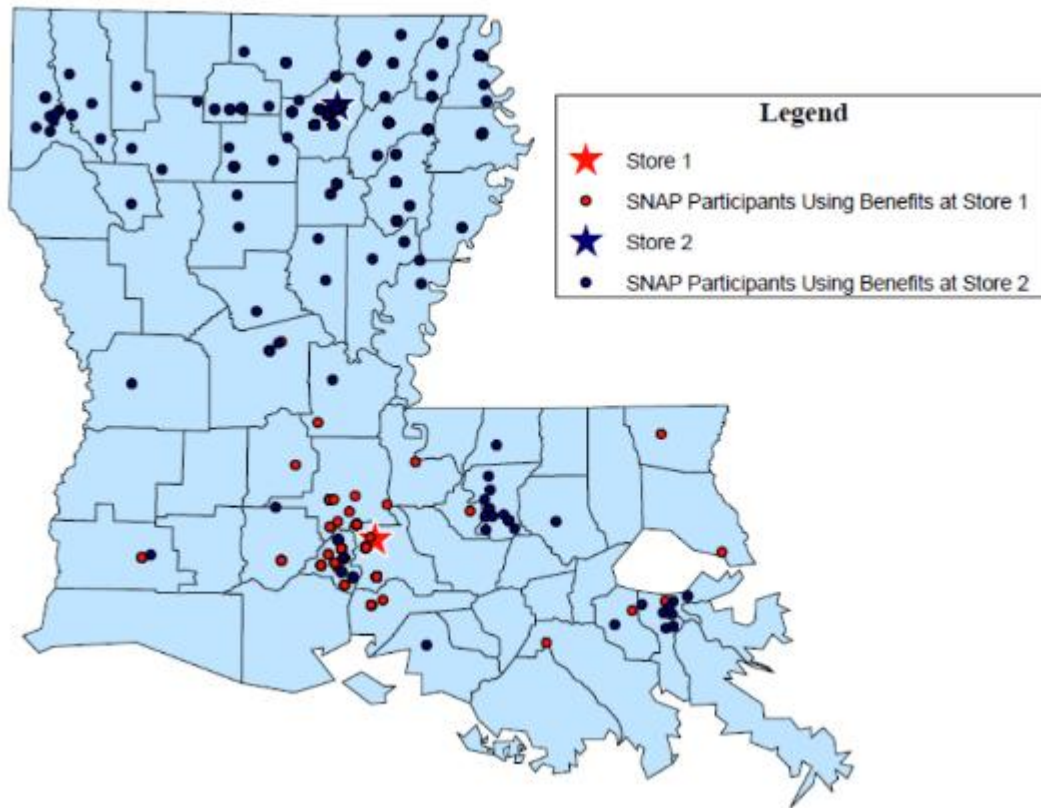


Short-term Rentals

EXHIBIT 6
311 Calls* at STR Properties Compared to 311 Calls Citywide*

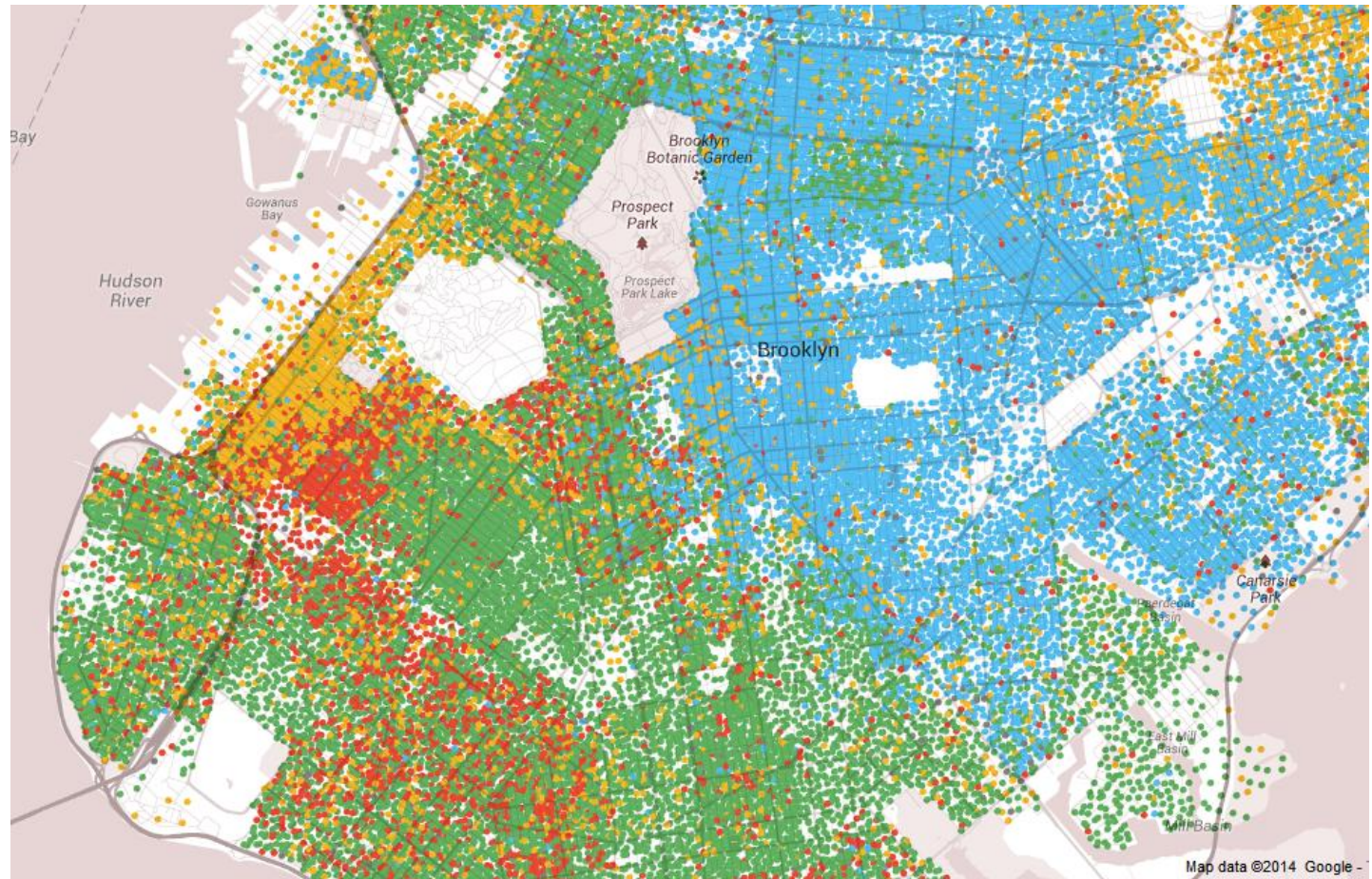


Fraud Detection

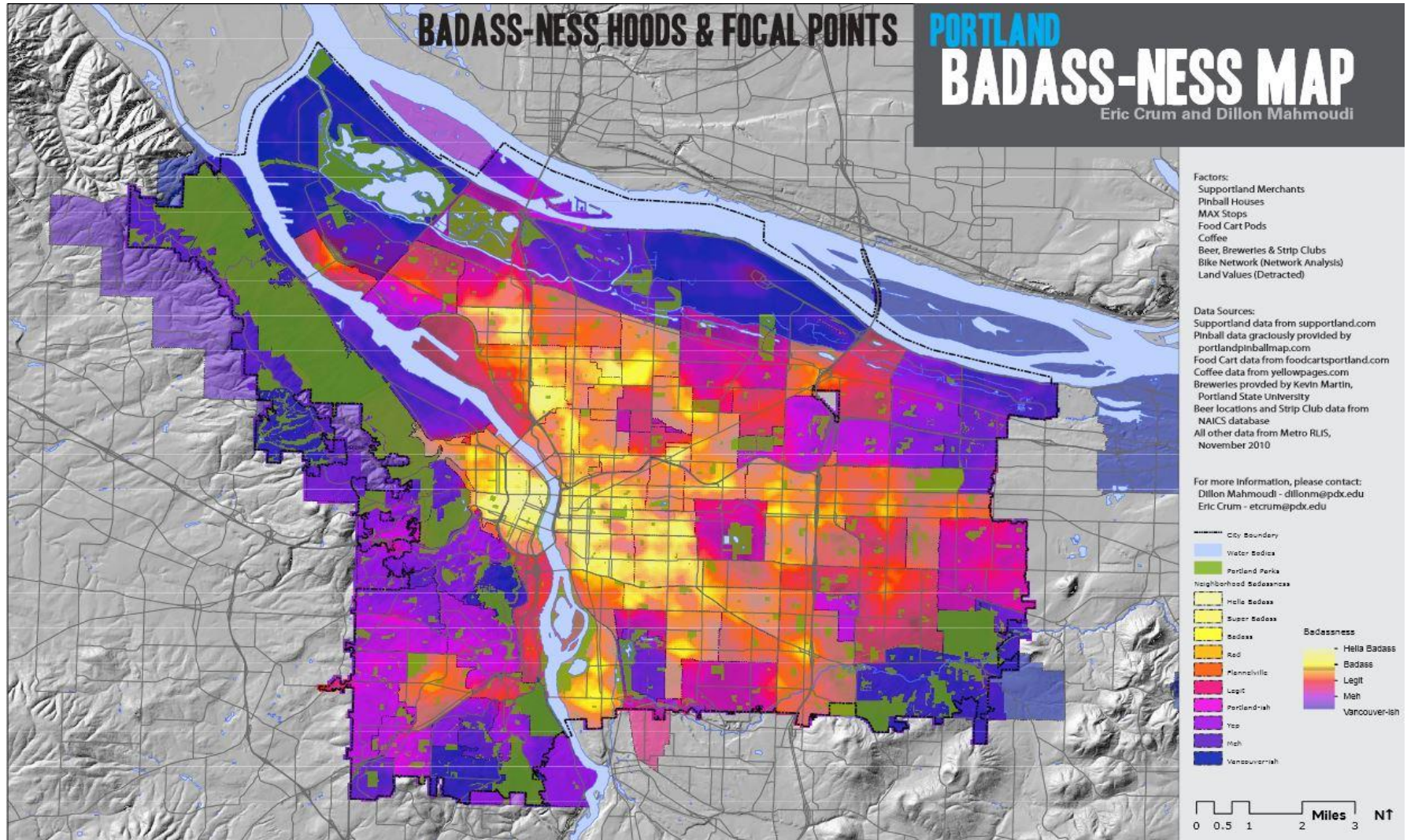


Mapping New York

Racial Segregation



Hipster's Map of Portland



Activities

- We'll take about 15 minutes
- Discuss the two scenarios among your tables



Activities Cont.

- It's 1854 London, hundreds are dying in SOHO and you need to figure out why
 - Each black bar represents one death
 - What, if any, causal relationship can you identify?
 - What needs to be done to eliminate outbreak?
 - What is your explanation for blocks that have no deaths?
- Katrina has struck and you are analyzing the aftermath
 - What patterns do you observe?
 - What story does the Map tell?

50 0 50 100 150 200
Yards

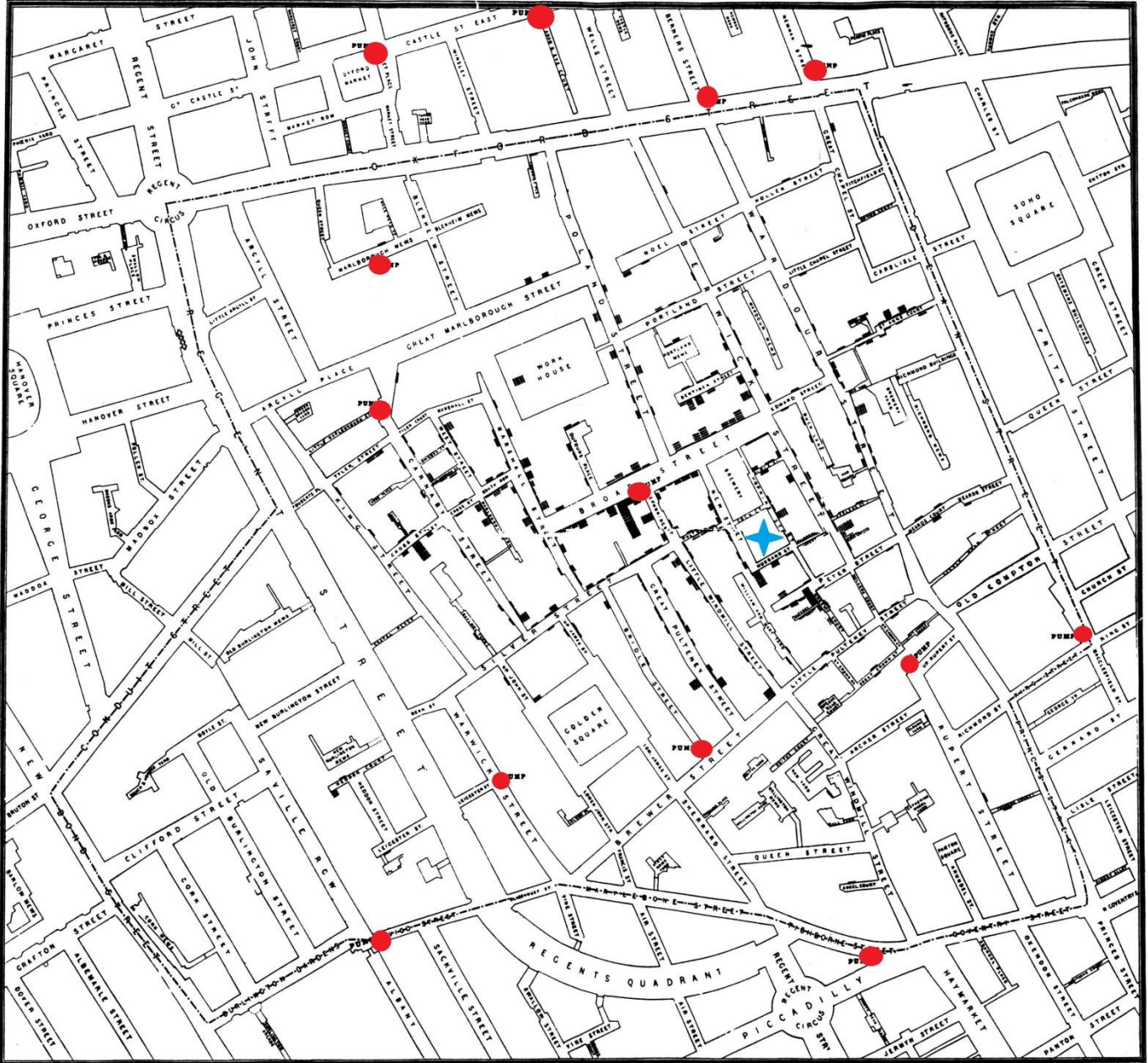
X Pump • Deaths From cholera



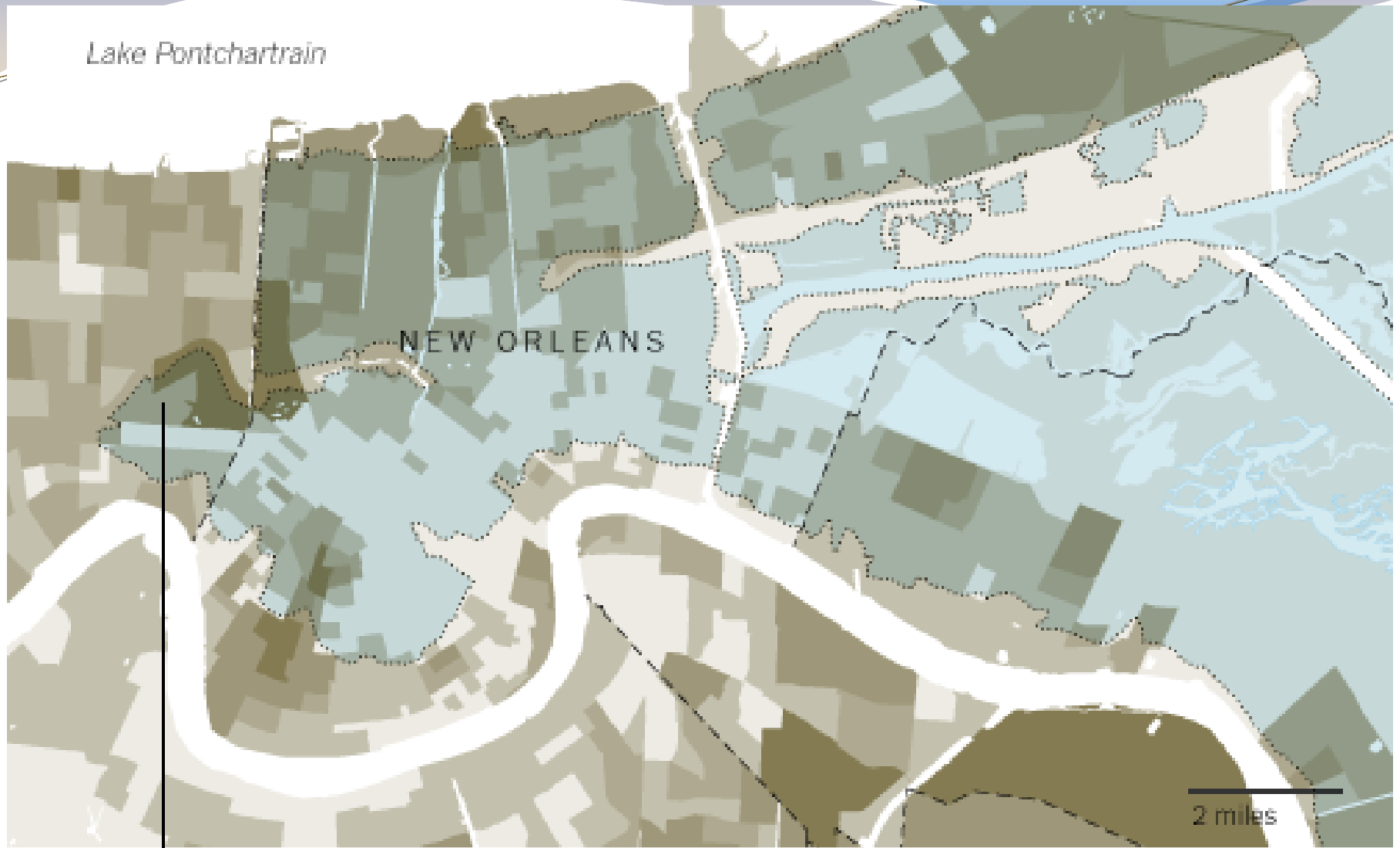
LEGON



John Snow – Pioneering Researcher



Lake Pontchartrain



Flooded areas

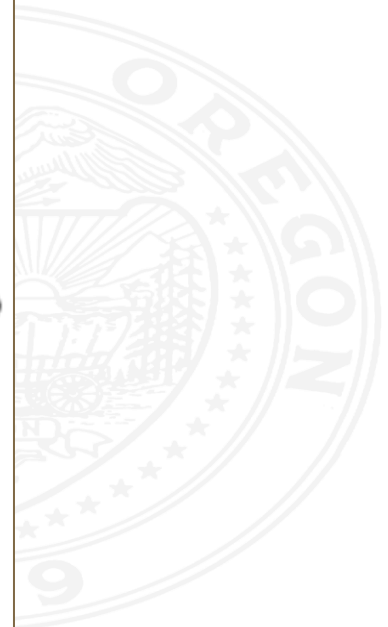
Median income

In thousands



Sometimes Tables are Better

Areas with significant flooding		Areas with little or no flooding		Areas with significant flooding		Areas with little or no flooding	
Population		Income					
346,000		138,000		\$25,759		MEDIAN HOUSEHOLD INCOME (1999) \$31,455	
Race and ethnicity							
76%	BLACK	43%		\$4.9	TOTAL AMOUNT EARNED BY ALL RESIDENTS	\$3.2	
18	WHITE	49		BILLION		BILLION	
3	HISPANIC	4		29%	POVERTY RATE	25%	
2	ASIAN	2		PERCENTAGE OF HOUSEHOLDS WITH INCOMES OF:			
1	OTHER	2		56%	LESS THAN \$30,000	48%	
Age				6%	MORE THAN \$100,000	13%	
PERCENTAGE OF RESIDENTS THAT WERE:							
28%	UNDER 18	22%		Houses			
11%	OLDER THAN 65	12%		145,000	NUMBER OF HOUSING UNITS	70,000	
Single-parent families				23%	HOUSES BUILT BEFORE 1940	44%	
29%	PERCENTAGE OF FAMILIES WITH SINGLE PARENTS	21%		52%	OCCUPIED BY RENTERS	56%	
Education				Transportation			
72%	HIGH SCHOOL GRADUATE	82%		29%	HOUSEHOLDS WITH NO VEHICLE	24%	
21%	BACHELOR'S DEGREE OR HIGHER	38%		21%	BACHELOR'S DEGREE OR HIGHER	38%	



Recap of Key Points



Questions



Contact Information

Oregon Audits Division

255 Capitol Street NE

STE 500

Salem, OR 97310

(503) 986-2255

Ian.M.Green@state.or.us

