



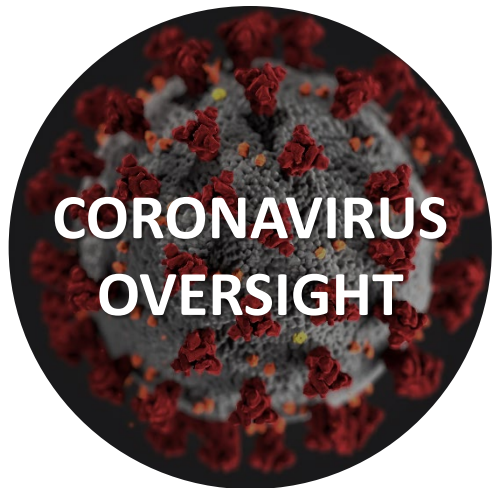
The Future of Accountability: Responding to Major National Challenges

Gene L. Dodaro

Comptroller General of the
United States

National Intergovernmental
Audit Forum
May 16, 2023





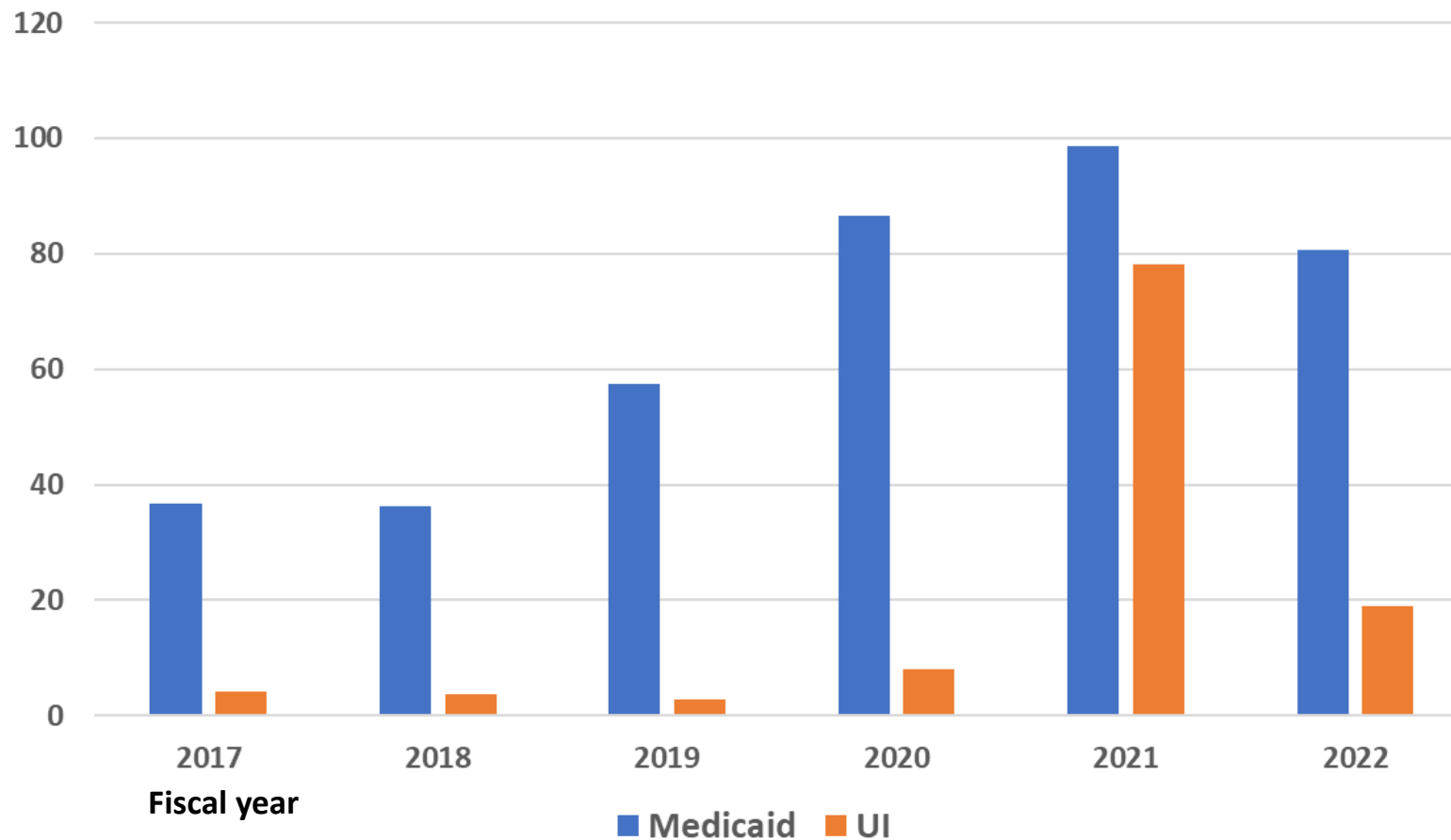


GAO's Fraud Risk Framework



Medicaid & UI Improper Payments, FY 2017-2022

Dollars (in billions)



Source: GAO analysis of OMB data



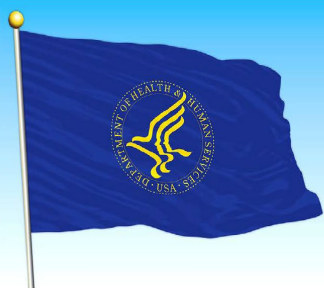
High Risk Area Additions

**STRENGTHENING
MANAGEMENT
OF THE FEDERAL
PRISON SYSTEM**



Source: Photo illustration of a prison facility. Jeffrey Zalesny/stock.adobe.com. | GAO-23-106203

**HHS LEADERSHIP
AND COORDINATION
OF PUBLIC HEALTH
EMERGENCIES**



Source: ftrio/stock.adobe.com. | GAO-23-106203

**UNEMPLOYMENT
INSURANCE
SYSTEM**



Source: Mr Doornik/stock.adobe.com. | GAO-23-106203

**EMERGENCY LOANS
FOR SMALL BUSINESSES**



Source: wladimir1804/stock.adobe.com. | GAO-23-106203

Areas Removed

**PENSION BENEFIT GUARANTY
CORPORATION INSURANCE
PROGRAMS**



Source: Brian Jackson/stock.adobe.com. | GAO-23-106203

**2020 DECENNIAL
CENSUS**



Source: U.S. Census Bureau. | GAO-23-106203

High Risk Area: Cybersecurity

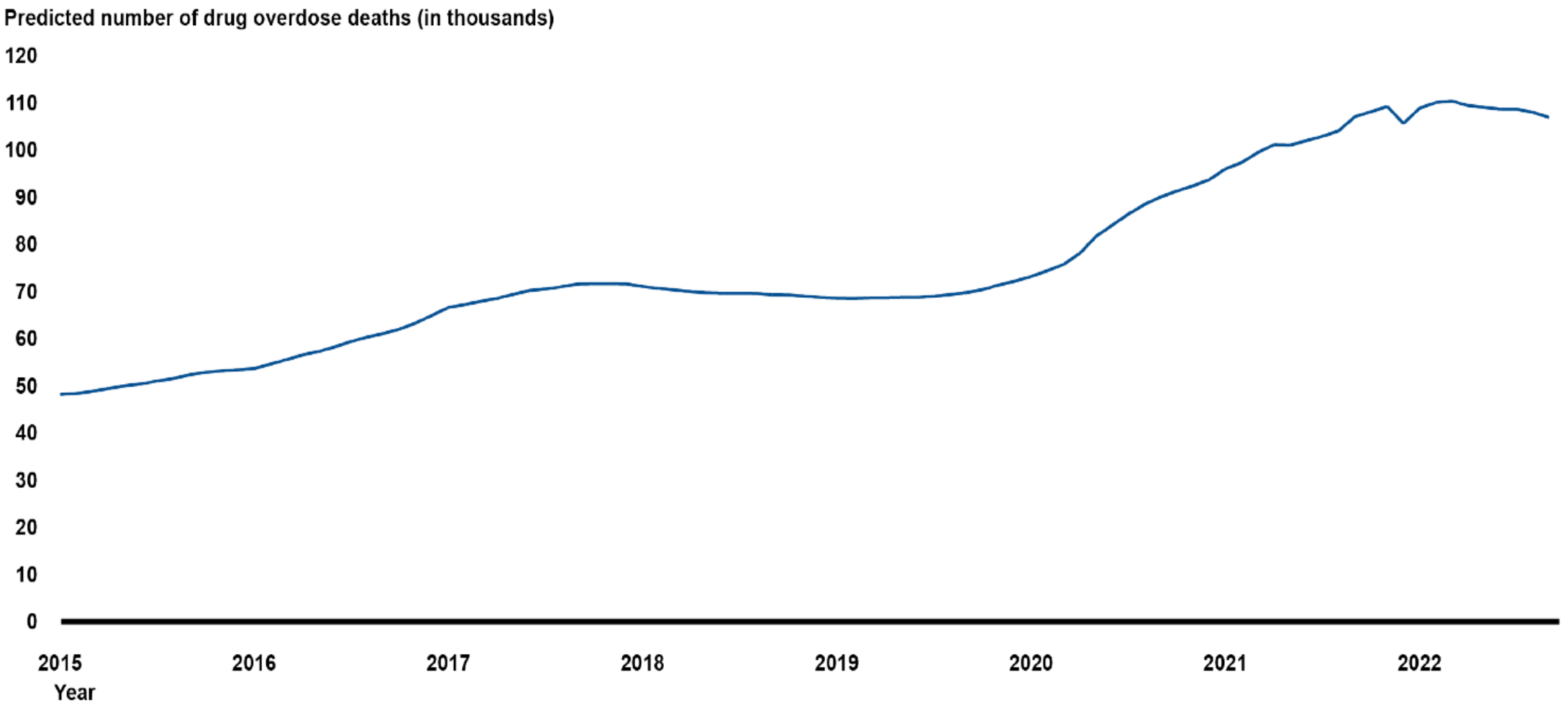
Four Major Cybersecurity Challenges



Source: GAO analysis; peshkov/stock.adobe.com; Gorodenkoff/stock.adobe.com; metamorworks/stock.adobe.com; Monster Zstudio/stock.adobe.com. | GAO-21-119SP

High Risk Area: Drug Misuse

Number of Drug Overdoses in the U.S., January 2015 through September 2022



Source: GAO Analysis of Centers for Disease Control and Prevention (CDC) National Center for Health Statistics data. | GAO-23-106203

Note: Provisional death counts are for “12-month ending periods,” defined as the number of deaths occurring in the 12-month period ending in the month indicated. Deaths are classified by the reporting jurisdiction in which the death occurred. Provisional drug overdose death counts are based on death records received and processed by the National Center for Health Statistics as of a specified cutoff date. Data in this figure are predicted provisional counts, which represent estimates of the number of deaths adjusted for incomplete reporting. Data for 2015 to 2021 may differ from published reports using final data. Data for 2022 are underreported due to incomplete data.

High Risk List: Other Areas of Focus



Modernizing the U.S. Financial Regulatory System



Enhanced Oversight of Medical Products



Federal Government's Fiscal Exposures to Climate Risks



SCIENCE & TECHNOLOGY

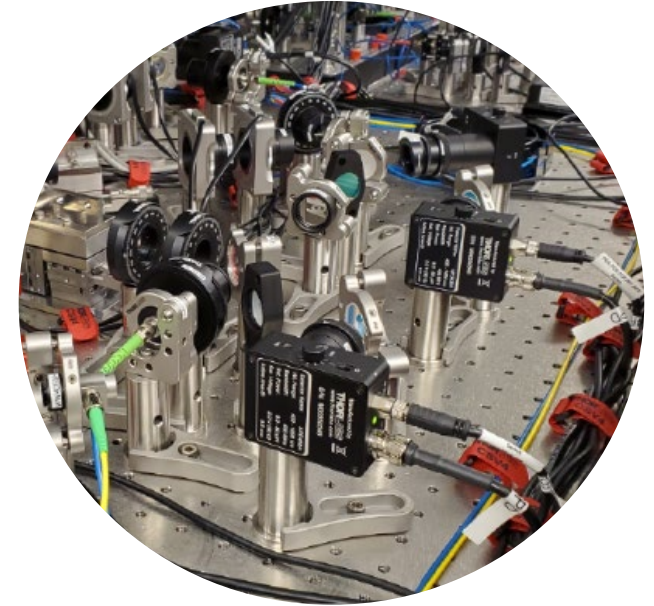
Recent S&T Spotlights

- **Data Security in a Post-Quantum World**
- **Synthetic Biology**
- **Brain-Computer Interfaces**
- **Long COVID**
- **Zero Trust Architecture**
- **Counter-Drone Technology**

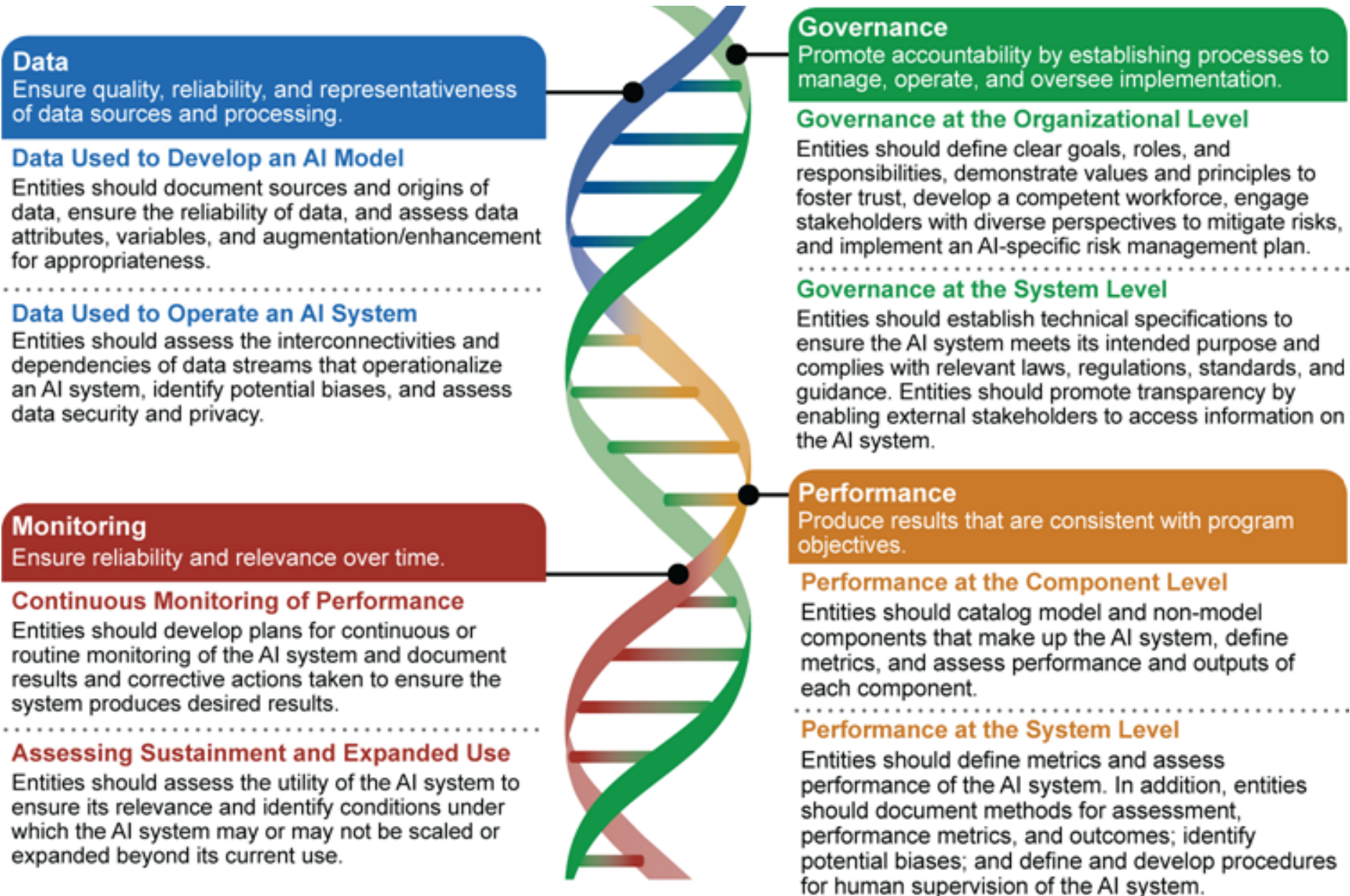


Recent Technology Assessments

- **AI in Health Care: Medical Diagnostics**
- **Quantum Computing**
- **Fusion Energy**
- **Effects of Large Satellite Constellations**
- **Utility-Scale Energy Storage**
- **Persistent Chemicals (PFAS Detection and Treatment)**
- **Carbon Capture**



GAO's AI Accountability Framework

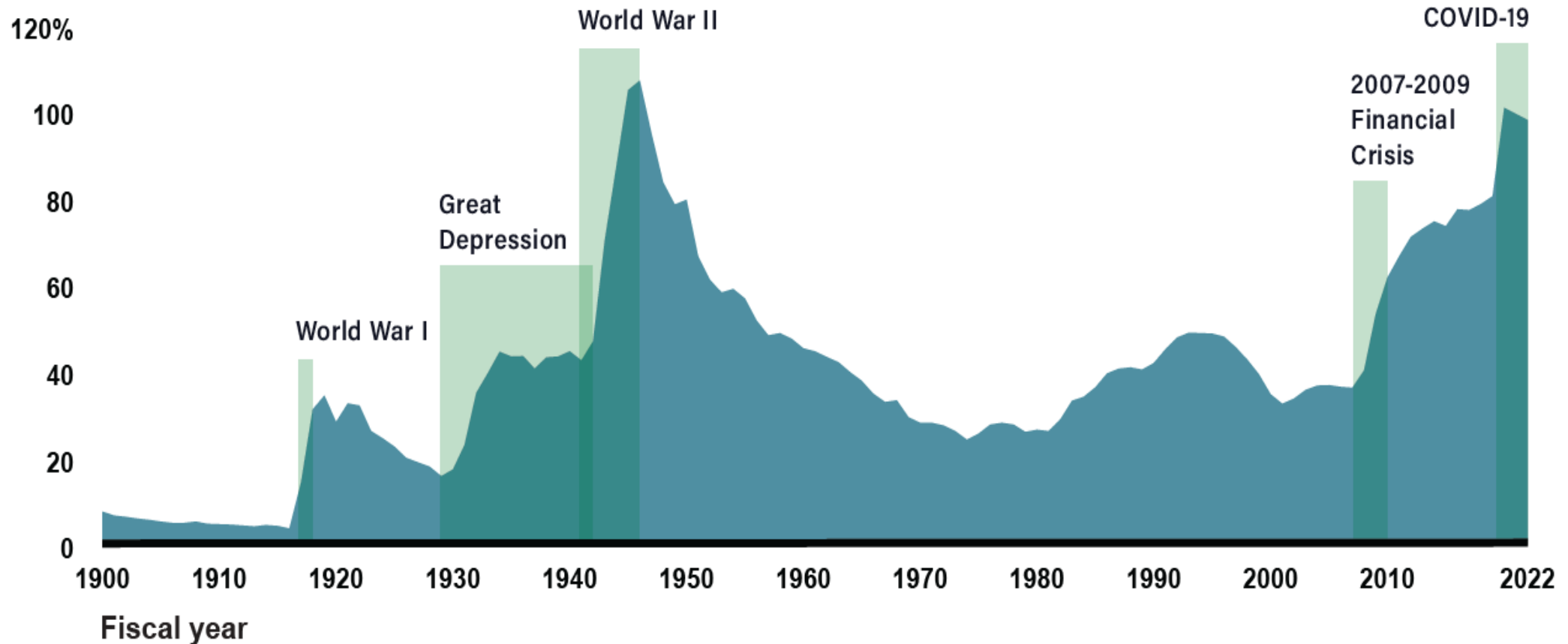


The graphic features a background image of the United States Capitol building on the left and a large, circular, semi-transparent overlay on the right. This overlay contains a faded image of a \$100 bill, specifically showing the portrait of Benjamin Franklin. The title 'AMERICA'S FISCAL FUTURE' is written in white, bold, sans-serif capital letters across the center of the circular overlay. The entire composition is accented with several diagonal, rounded rectangular shapes in shades of light blue and white, and a dark green silhouette of a mountain range at the bottom of the circular overlay.

AMERICA'S FISCAL FUTURE

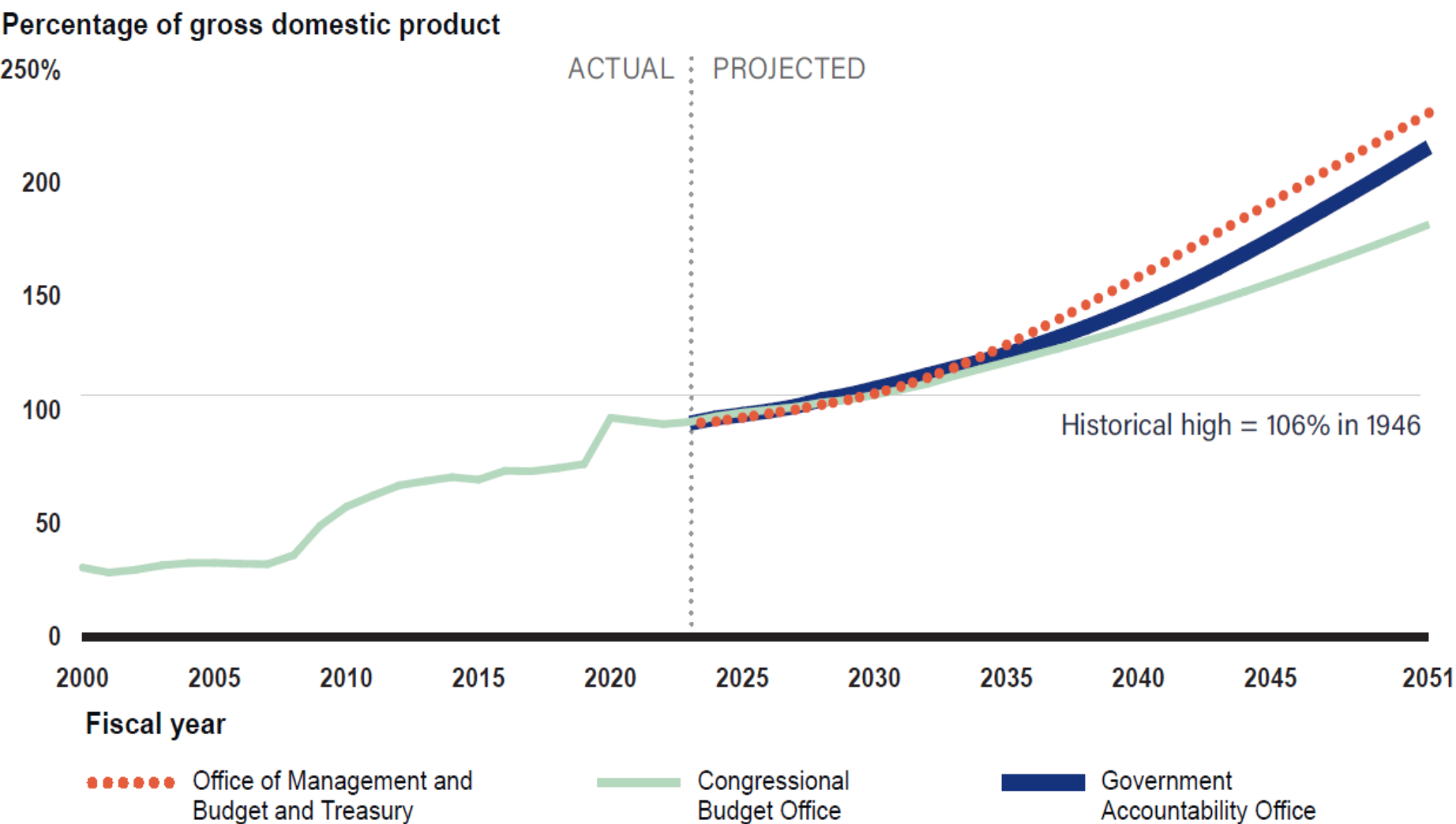
Federal Debt Held by the Public as a Share of GDP, 1900-2022

Percentage of gross domestic product



Source: Congressional Budget Office data. | GAO-23-106201

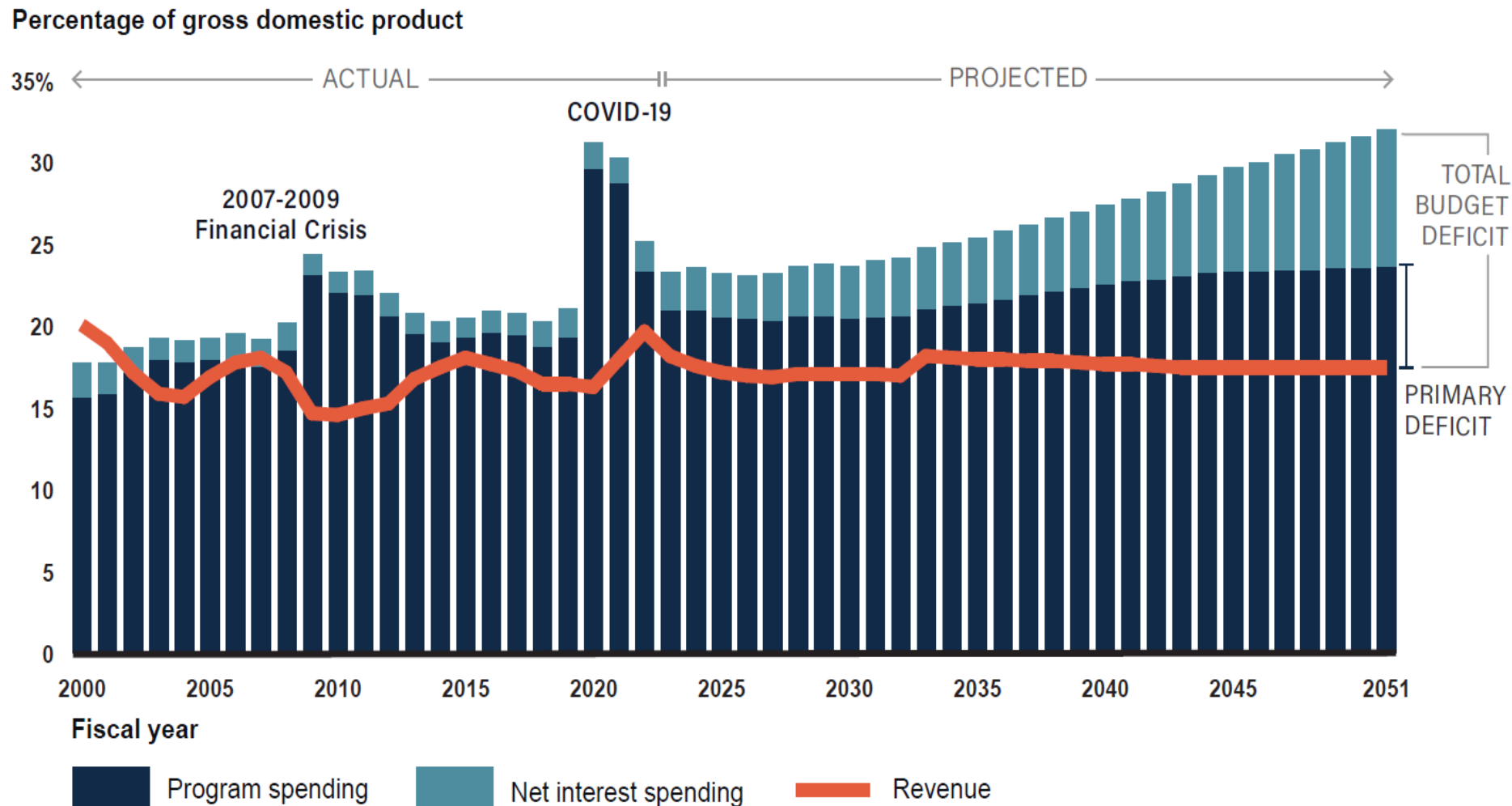
Debt Held by the Public as a Share of GDP under Various Policy Simulations



Source: Congressional Budget Office July 2022 and February 2023 Outlooks, Fiscal Year 2022 Financial Report of the U.S. Government, and GAO simulation. | GAO-23-106201

Note: Each of these projections uses different budgetary and economic assumptions to generate the debt-to-GDP ratio in each year. Our simulation incorporates many of CBO's assumptions, with some adjustments to the discretionary spending and mandatory spending assumptions, which explain the divergence in later years. The OMB-Treasury model assumes higher program spending than CBO and GAO and higher interest rate assumptions in the first 20 projection years. These varying assumptions help explain the different outcomes.

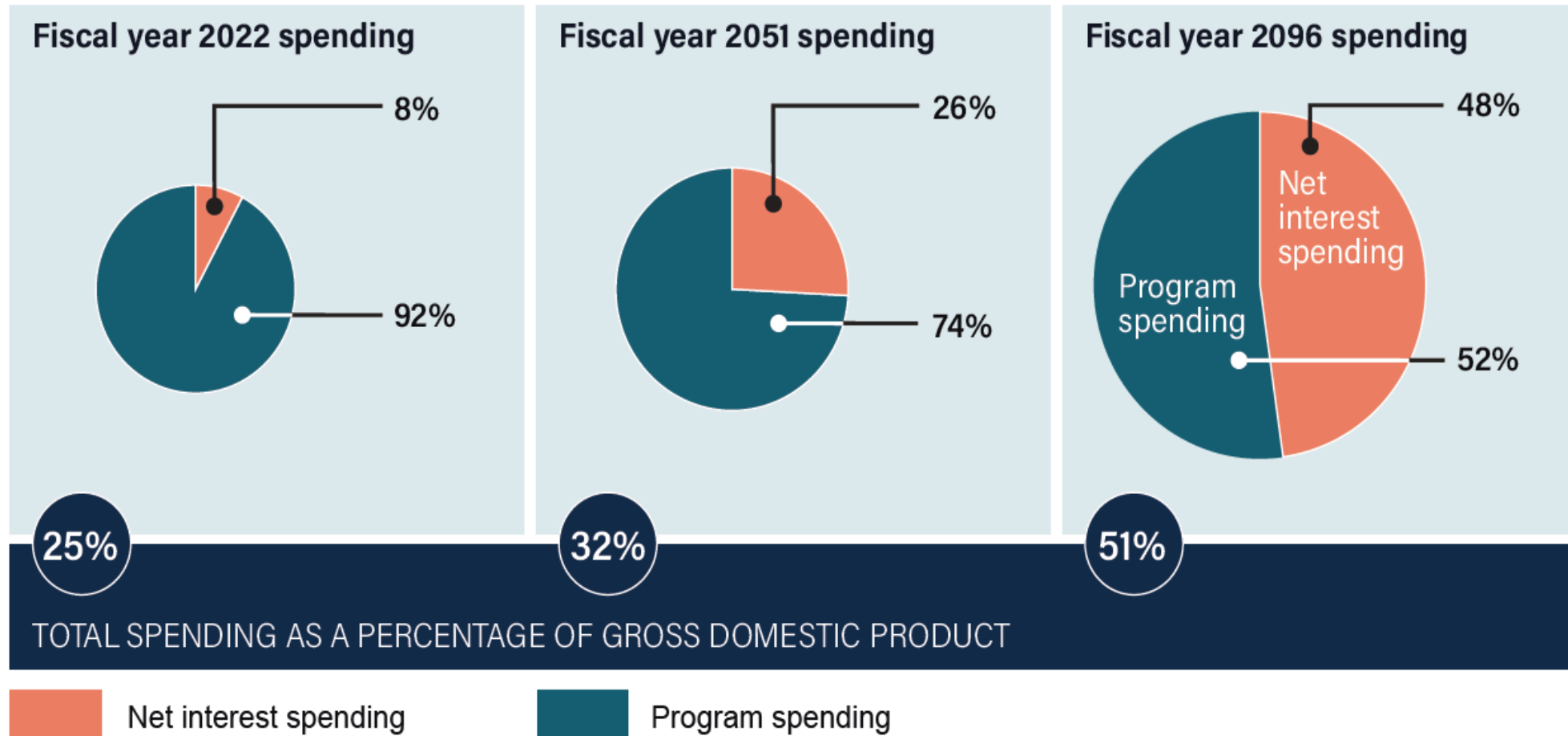
Primary Deficit and Total Budget Deficit, Actual, and Projected



Source: Congressional Budget Office data and GAO simulation. | GAO-23-106201

Note: Starting in 2033 our simulation phases total revenue to a constant at the 50-year historical average as of 2022.

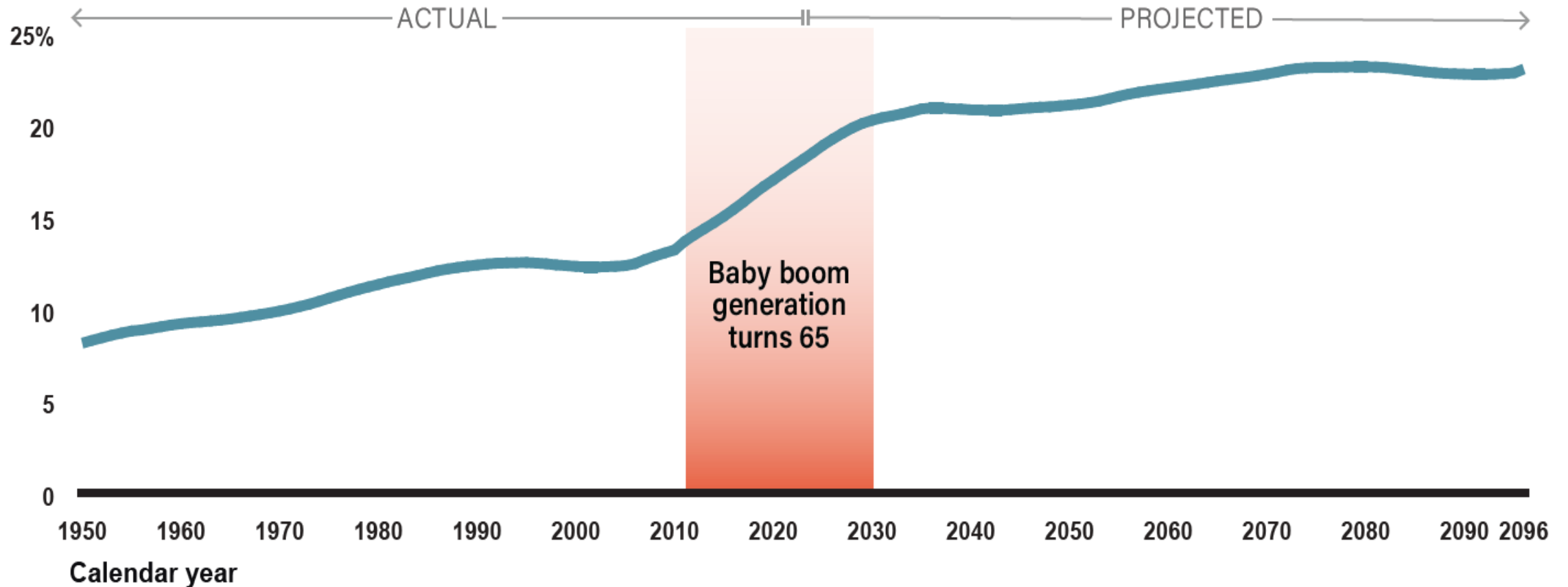
Federal Net Interest Spending as a Share of Total Spending



Source: Congressional Budget Office data and GAO simulation. | GAO-23-106201

Older Americans Are a Greater Share of the Total Population

Percentage of population age 65 and over



Source: GAO analysis of 2023 Social Security Trustees' Report (intermediate assumptions). | GAO-23-106201



The Future of Accountability: Responding to Major National Challenges

Gene L. Dodaro

Comptroller General of the
United States

National Intergovernmental
Audit Forum
May 16, 2023

